


专业数字打击垫  
 DP-2000




# USING THE UNIT SAFELY

## INSTRUCTIONS FOR THE PREVENTION OF FIRE, ELECTRIC SHOCK, OR INJURY TO PERSONS

### About ⚠️ WARNING and ⚠️ CAUTION Notices

|  |   |
|--|---|
|  <b>WARNING</b> | <p>Used for instructions intended to alert the user to the risk of death or severe injury should the unit be used improperly.</p> |
|--|---|

### About the Symbol

|  |  |
|--|--|
|  <b>CAUTION</b> | <p>Used for instructions intended to alert the user to the risk of injury or material damage should the unit be used improperly.<br/>* Material damage refers to damage or other adverse effects caused with respect to the home and all its furnishings, as well to domestic animals or pets.</p> |
|--|--|

## ALWAYS OBSERVE THE FOLLOWING

### ⚠️ WARNING

- Before using this unit, make sure to read the instructions below and the Owner's Manual.
- Do not open ( or modify in any way ) the unit or its AC adaptor.
- Do not attempt to repair the unit, or replace parts within it ( except when this manual provides specific instructions directing you to do so ). Refer all servicing to your retailer, the nearest NUX Service Center.
- Never use or store the unit in places that are:
  - Subject to temperature extremes ( e.g., direct sunlight in an enclosed vehicle, near a heating duct, on top of heat-generating equipment ).
  - Damp (e.g., baths, washrooms, on wet floors ).
  - Humid.
  - Exposed to rain.
  - Dusty.
  - Subject to high levels of vibration.
- This unit may be installed on stand using a Clamp.
- When installing the unit on a stand with a clamp, the stand must not be placed in an unstable location or on an incline, but in a level and stable position. Even if a stand is not used, make sure that the unit is placed in a stable location.

### ⚠️ WARNING

- Be sure to use only the AC adaptor supplied with the unit. Also, make sure the line voltage at the installation matches the input voltage specified on the AC adaptor's body. Other AC adaptors may use a different polarity, or be designed for a different voltage, so their use could result in damage, malfunction, or electric shock.
- Do not excessively twist or bend the power cord, nor place heavy objects on it. Doing so can damage the cord, producing severed elements and short circuits. Damaged cords are fire and shock Hazards!
- This unit, either alone or in combination with an amplifier and headphones or speakers, may be capable of producing sound levels that could cause permanent hearing loss. Do not operate for a long period of time at a high volume level, or at a level that is uncomfortable. If you experience any hearing loss or ringing in the ears, you should immediately stop using the unit, and consult an Audiologist.
- Do not allow any objects ( e.g., flammable material, coins, pins ); or liquids of any kind ( water, soft drinks, etc.) to penetrate the unit.

### ⚠️ WARNING

- Immediately turn the power off, remove the AC adaptor from the outlet, and request servicing by your retailer, the nearest NUX Service Center.
  - The AC adaptor or the power-supply cord has been damaged.
  - If smoke or an unusual odor occurs.
  - Objects have fallen into, or liquid has been spilled onto the unit.
  - The unit has been exposed to rain ( or otherwise has become wet ).
  - The unit does not appear to operate normally or exhibits a marked change in performance.

- In households with small children, an adult should provide supervision until the child is capable of following all the rules essential for the safe operation of the unit.

- Protect the unit from strong impact. (Do not drop it!)

- Do not force the unit's power-supply cord to share an outlet with an unreasonable number of other devices. Be especially careful when using extension cords-the total power used by all devices you have connected to the extension cord's outlet must never exceed the power rating (watts/amperes) for the extension cord. Excessive loads can cause the insulation on the cord to heat up and eventually melt through.

- Before using the unit in a foreign country, consult with your retailer, the nearest NUX Service Center.

### ⚠️ CAUTION

- The unit and the AC adaptor should be located so their location or position does not interfere with their proper ventilation.

- Always grasp only the output plug or the body of the AC adaptor when plugging into, or unplugging from, this unit or an outlet.

- Any accumulation of dust between the AC adaptor and the power outlet can result in poor insulation and lead to fire. Periodically wipe away such dust with a dry cloth. Also, disconnect the power plug from the power outlet whenever the unit is to remain unused for an extended period of time.

- Try to prevent cords and cables from becoming entangled. Also, all cords and cables should be placed so they are out of the reach of children.

- Never climb on top of, nor place heavy objects on the unit.

- Never handle the AC adaptor body, or its output plugs, with wet hands when plugging into, or unplugging from, an outlet or this unit.

- If you need to move the instrument, take note of the precautions listed below. Make sure to have a firm grip, to protect yourself from injury and the instrument from damage.
  - Check to make sure that the clamp that fixes the unit to the stand has not become loose. Fasten them again securely whenever you notice any loosening.
  - Disconnect the power cord.
  - Disconnect all cords coming from external devices.

- Before cleaning the unit, turn off the power and unplug the AC adaptor from the outlet.

- Whenever you suspect the possibility of lightning in your area, disconnect the AC adaptor from the outlet.

- Should you remove security screws, make sure to put them in a safe place out of children's reach, so there is no chance of them being swallowed accidentally.

|   |    |
|---|----|
| <b>Control panel</b>                        |    |
| Front panel                                 | 04 |
| Top panel                                   | 05 |
| <b>Connect audio devices</b>                | 06 |
| <b>About the screen</b>                     | 07 |
| <b>Ready to play</b>                        | 08 |
| Power on / off                              | 08 |
| How to play                                 | 08 |
| <b>Tone operation-tone overall switch</b>   | 08 |
| Select tone                                 | 08 |
| Tone overall switch                         | 08 |
| <b>Effect Send Function Operation (EFX)</b> | 09 |
| <b>Metronome</b>                            | 09 |
| <b>Song function operation</b>              | 10 |
| <b>Recording function operation</b>         | 10 |
| <b>System function operation</b>            | 12 |
| TRIGGER SETTING                             | 12 |
| SOUND TONE EDITING                          | 12 |
| LAYERS                                      | 13 |
| PAD SETTING                                 | 13 |
| EFFECT SETTING                              | 14 |
| KIT NAME                                    | 15 |
| RESET SETTING                               | 15 |
| OPTION SETTING                              | 15 |
| OUTPUT SETTING                              | 16 |
| MIDI NOTE SETTING                           | 16 |
| WAV FILE SETTING                            | 16 |
| USB DISK / BLUETOOTH                        | 17 |
| EXPAND THE SETTING                          | 17 |
| <b>Specifications</b>                       | 18 |

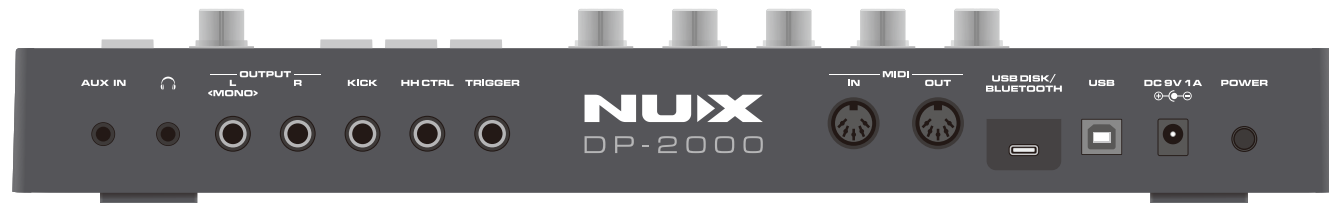
## ■ Front panel



|   |   |   |   |
|---|---|---|---|
| <b>MASTER knob</b><br>Master output volume  | <b>PHONES knob</b><br>Headphones volume                                   | <b>TEMPO knob</b><br>Metronome speed regulation   | <b>FX 1 knob</b><br>Effector gr 1 transmission adjustment (with FX 1 button below, this knob is invalid when FX 1 is off) |
| <b>FX 2 knob</b><br>Effector gr 2 transmission adjustment (with FX 2 button below, this knob is invalid when FX 2 is off) | <b>MUTE button</b><br>Global mute (including total output and headphones) | <b>KIT button</b><br>Drum selection button (press this key in any mode to jump to the drum selection interface) | <b>CLICK button</b><br>Turn on/off the Metronome  |
| <b>FX 1 button</b><br>Effector group 1 on/off button  | <b>FX 2 button</b><br>Effector group 2 on/off button                      | <b>F1 F2 F3 button</b><br>Multi-function button   | <b>VALUE/ENTER knob</b><br>Parameter adjustment and confirmation key (rotate adjustment, press confirmation)              |
| <b>REC button</b><br>Recording function button (need to use with U disk)  | <b>SONG button</b><br>Music function button (need to use with U disk)     | <b>PLAY/STOP button</b><br>Play and pause (play and pause U disk content)                                       |   |

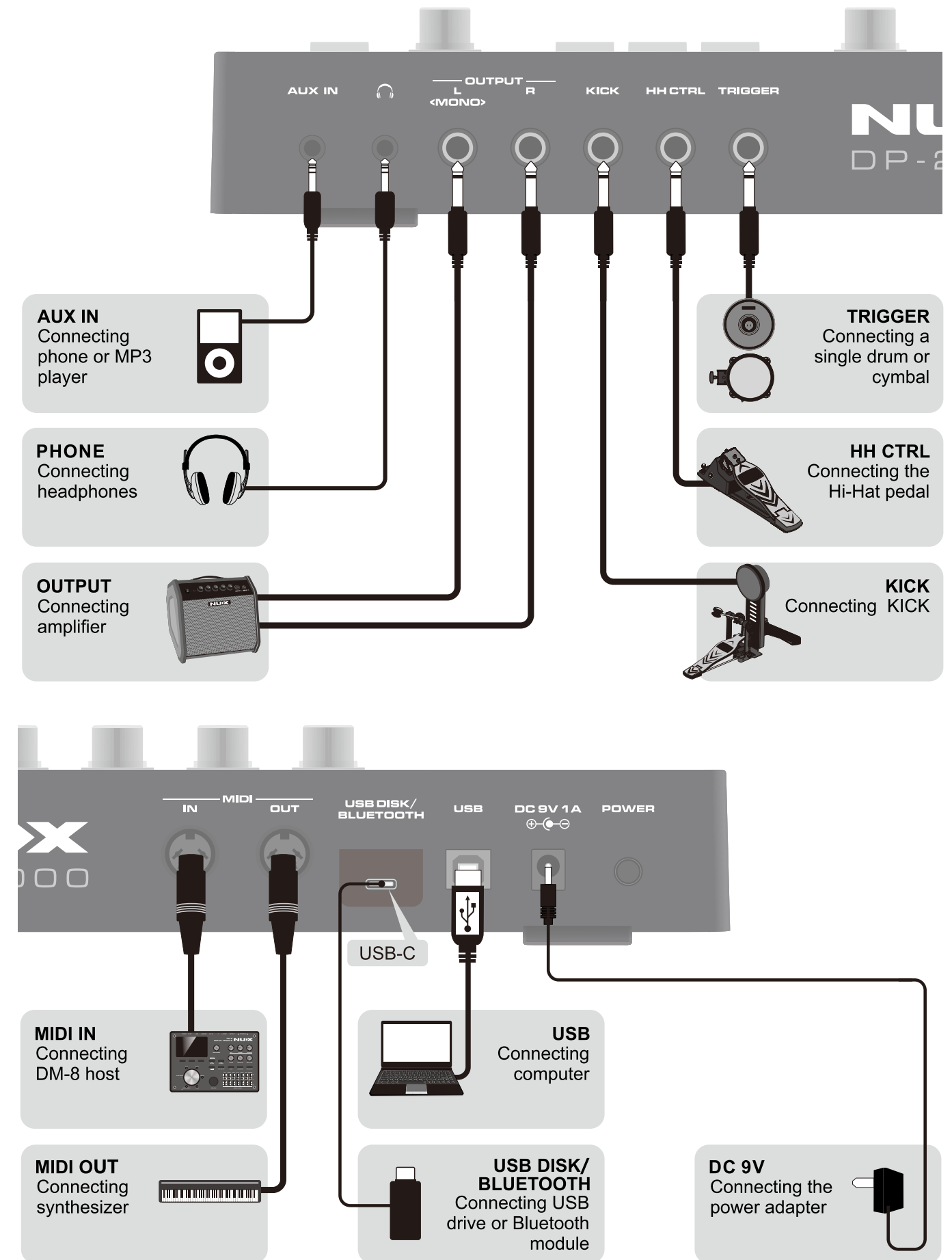
# Control Panel

## Top panel









|   |  |   |  |
|---|--|---|--|
| <b>AUX IN</b><br>3.5mm external audio interface | <b>PHONE</b><br>3.5mm headphone jack                               | <b>OUTPUT L &lt;MONO&gt;</b><br>6.35mm left / mono output interface | <b>OUTPUT R</b><br>6.35mm right sound channel output interface |
| <b>KICK</b><br>External bottom drum interface   | <b>HH CTRL</b><br>External cymbals controller interface            | <b>TRIGGER</b><br>External expansion interface                      | <b>MIDI IN</b><br>Midi signal input interface                  |
| <b>MIDI OUT</b><br>Midi signal output interface | <b>USB DISK/ BLUETOOTH</b><br>U disk or Bluetooth module interface | <b>USB</b><br>Output interface                                      | <b>DC 9V</b><br>Power supply adapter interface                 |
| <b>POWER</b><br>DP-2000 power supply switch     |  |   |  |

# Connect audio devices



# About the screen



|  |  |  |  |
|--|--|--|--|
| <br>Level 10 strength display | PAD1<br>Current percussion strike pad display  | <br>Bluetooth connection icon | <br>The USB connection icon |
| <br>U disk connection icon    | <br>Memory lock open icon | <br>Icon in the recording     | TEMPO 220<br>Metronome speed display   |
| CLICK<br>Metronome function setting  | MENU<br>Primary menu   | EFX<br>Effect group allocation setting   |  |

# Ready to play

## Power on / off



### Turn on the power supply

Turn on the power supply

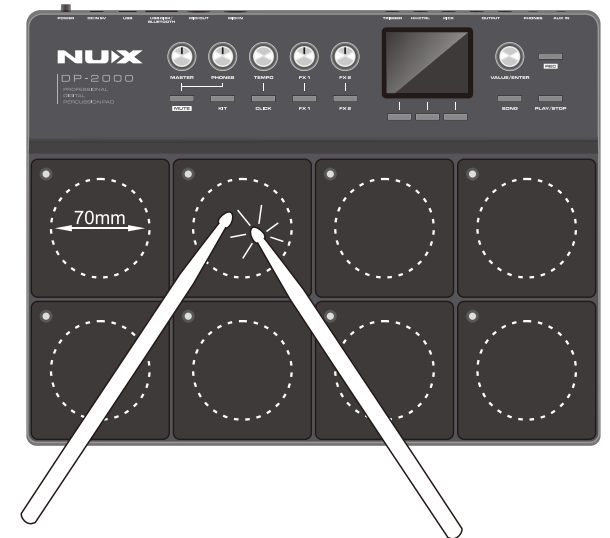
1. Set the MASTER and PHONES knobs off to minimum levels.
2. Turn down the volume of the external amplifier.
3. Press the power switch to turn the DP-2000 on.

\* When you turn on the power supply, you may hear a weak sound like the electric current sound, which is normal, not a fault.

### Turn off the power supply

1. Turn down the volume of the amplifier or turn off the amplifier first.
2. Turn off the power of DP-2000.

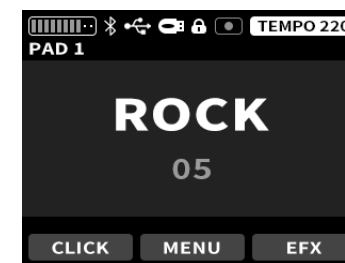
## How to play



Strike the center of the pad for the best results. The best strike area for each pad is a circle with a diameter of 70mm in the center

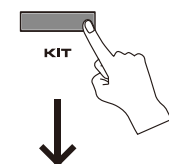
# Tone operation-tone overall switch

Enter the KIT mode upon boot-up.



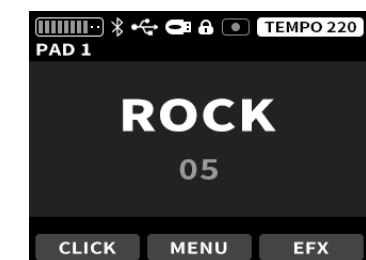
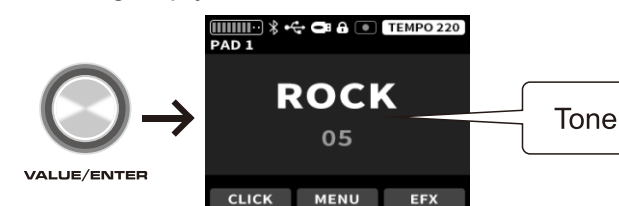
## Tone overall switch

In any mode, pressing the KIT key returns directly to the KIT selection mode.



## Select tone

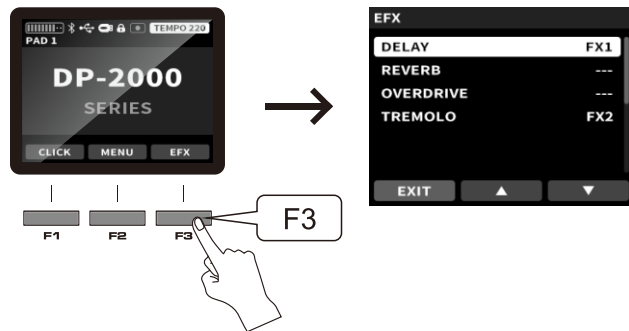
Turn the VALUE / ENTER knob to select the sound group you want.



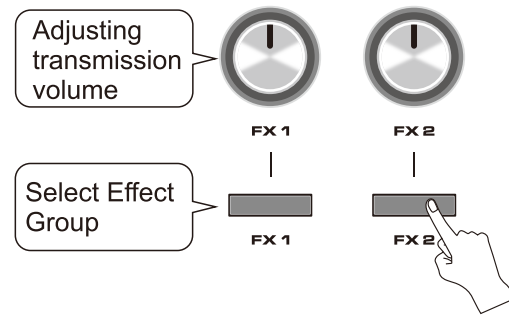
# Effect Send Function Operation (EFX)

## Entering EFX mode

Under the main interface, press the key F3 to enter the EFX mode, as shown below.



2. When it is determined to be assigned, press the FX 1 / FX 2 key under the panel to light it on, and then adjust the transmission volume of the group through the FX 1 / FX 2 knob.



## Send Effects

1. In this mode, select the effect you want to send through the upper and lower keys, and select the VALUE knob to assign it to either the FX 1 group or the FX 2 group or No assignment.

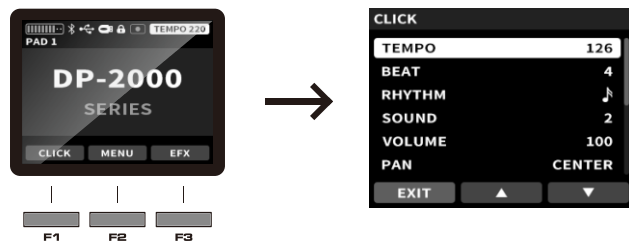


- Multiple effects can be assigned to the same group and adjusted by the FX knob.
- If FX 1 or FX 2 has no effect allocation, the FX 1 / FX 2 button on the panel cannot be lit, and the operation is invalid.

# Metronome

## Enter rhythm setting interface

Under the main interface, press the F1 key CLICK to enter the metronome setting, as shown in the figure below



## Set Metronome

After entering, select the parameters you need to adjust through the upper and down keys, and use the VALUE knob to adjust the parameter content.

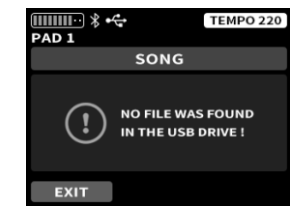


| Parameter control table |  |                   |
|-------------------------|--|-------------------|
| Name                    | Range                                  | Function          |
| TEMPO                   | 40-280                                 | Speed             |
| BEAT                    | 1-9                                    | Beats             |
| RHYTHM                  | 4 notes / 8 notes / 16 notes / triplet | Beat choice       |
| SOUND                   | 1-6                                    | Metronome tone    |
| VOLUME                  | 0-127                                  | Metronome volume  |
| PAN                     | L64-CENTER-R63                         | Metronome panning |

# Song function operation

This mode needs to be used in conjunction with a USB drive, and only supports USB drives with formats FAT32 and FAT16. The WAV file placed in the USB flash drive must have a format of 44100Hz and 16bit. If any of the above conditions are not met, this function will not be able to be used.

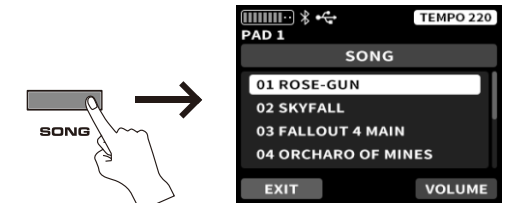
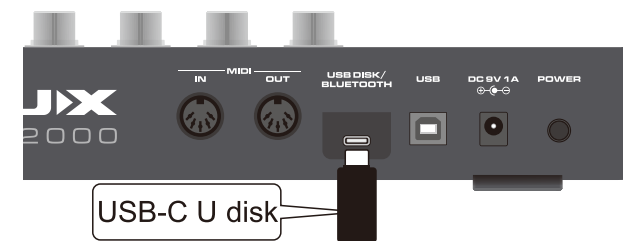
If there is no wav file in the U disk music or folder creation error, the figure below.



## Create directory

Before use, you need to create a folder in the U disk and name it SONG (capital), and put the song file in wav format into the SONG folder of the U disk (only wav format is supported).

If the U disk is ready, click the SONG button on the panel and go directly to the song selection interface below.



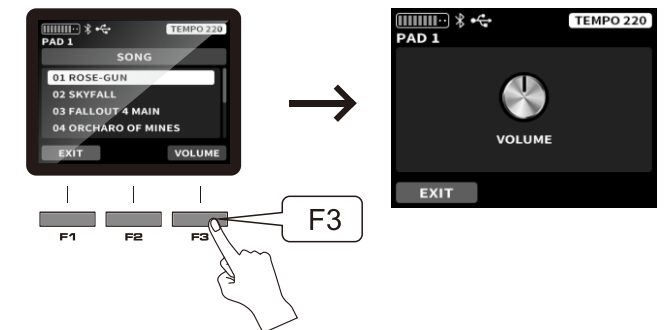
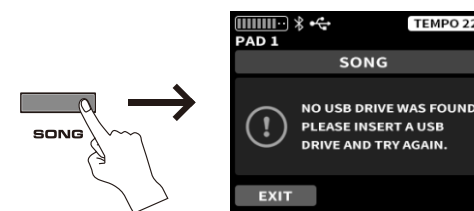
## SONG interface operation

Select the track through the VALUE knob and press PLAY / STOP to play or pause the piece.

Under the SONG interface, press the VOLUME corresponding to F3 to enter the song volume adjustment interface. Adjust the volume of the music by using VALUE.

## Enter the SONG interface

With no U disk connection, press the SONG button in the panel as shown below.

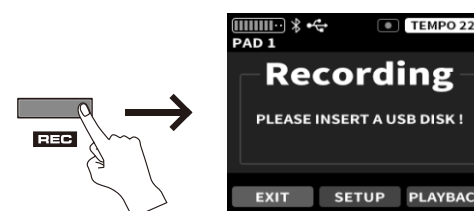


# Recording function operation

## Enter the recording interface

This mode must be used with the U disk. If the REC key is pressed without the U disk access, the following interface is displayed

When the U disk is correctly connected, press the REC of the panel, enter the recording mode, and the REC key is long and bright

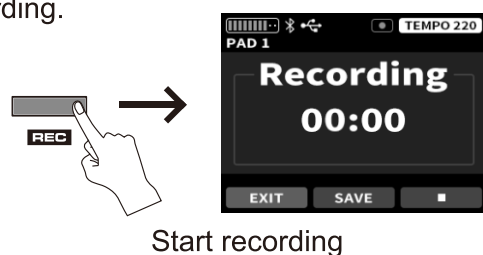


Entering recording mode

# Recording function operation

## Start/Stop Recording

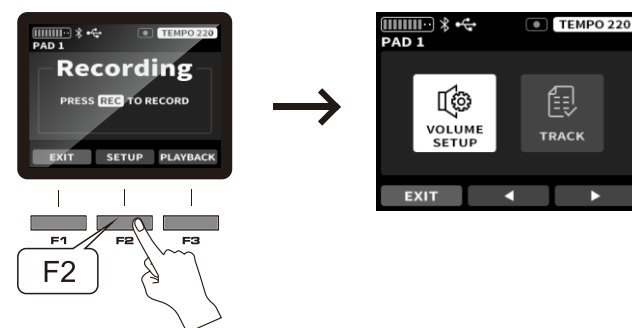
In recording mode, press the REC key again to start recording, and then the REC key flashes. After the recording, press the F3 key to stop recording.



Start recording

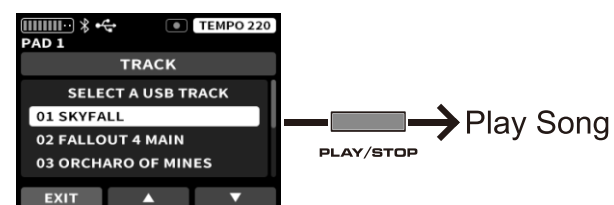
## Recording interface settings

Under the main recording interface, press F2 SETUP to enter the recording setting and the saved recording list.

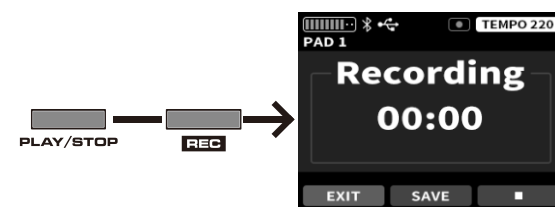


- VOLUME SETUP Used to adjust the volume balance of the accompaniment song and DRUM PAD.
- TRACK is the list of the saved recording content.

Under the TRACK interface, the music stored in the U disk can also be displayed, and you can follow the rhythm of the music. If REC is pressed under the TRACK interface, the recording will start and jump to the recording interface, where the music will be recorded at the same time as the content you play.

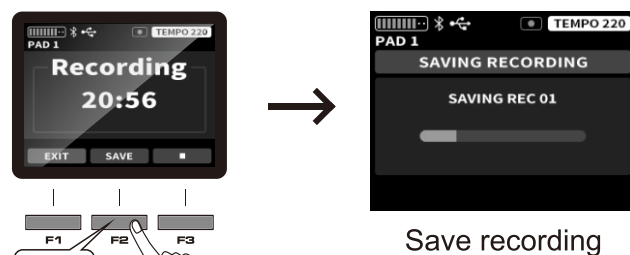


Under the TRACK interface, press PLAY / STOP to play the music in the U disk. If you press REC after playing, the recording starts, jump to the recording interface, and the music and playing content will be recorded at the same time.

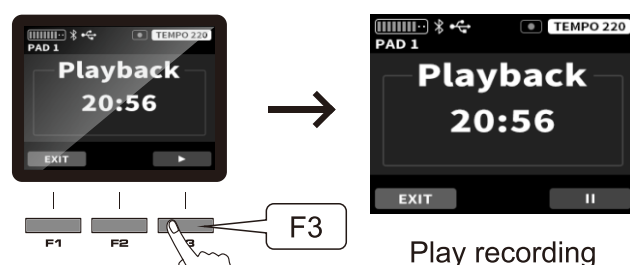


## Save/Play Recording

After the recording stops, you can choose to play the previous recording or save the previous recording. If you choose to save the recording, the previous recording will be saved in the SONG folder of the U disk.



Save recording



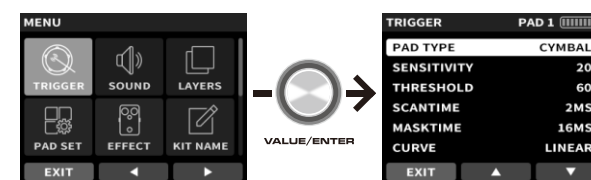
Play recording

# System function operation

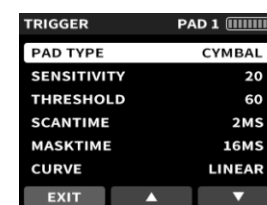
## TRIGGER SETTING

### Enter TRIGGER interface

Enter the MENU to find the TRIGGER through the VALUE / ENTER knob, and press the VALUE / ENTER to enter the TRIGGER setting.



### Set TRIGGER interface



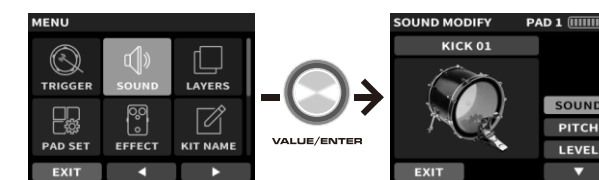
This interface is used to adjust the sensitivity and other parameters of each strike pad. Select the parameters you want to adjust with the F2/F3 key and use the VALUE knob.

| Parameter control table |                         |   |
|-------------------------|-------------------------|---|
| Name                    | Range                   | Function  |
| PAD TYPE                | CYMBAL/<br>DRUM PAD     | This parameter is only enabled when external pads or cymbals are connected, otherwise it will be automatically hidden |
| SENSITIVITY             | 1-99                    | Adjust the strike pad sensitivity   |
| THRESHOLD               | 1-99                    | Adjust the blow pad trigger level   |
| SCANTIME                | 1MS-8MS                 | Adjust the detection time of the trigger signal   |
| MASKTIME                | 4MS-64MS                | Adjust the shielding time of the trigger signal   |
| CURVE                   | LINEAR/EXP<br>/LOG/LOUD |   |
| RETRIG<br>CANCEL        | 0-99                    | Regulates the repeated trigger value of the trigger signal  |
| XTALK<br>CANCEL         | 0%-80%                  | Adjust the cross-over crosstalk values  |

## SOUND TONE EDITING

### Enter SOUND interface

Enter the MENU to find the SOUND through the VALUE / ENTER knob, and press the VALUE / ENTER to enter the SOUND setting.



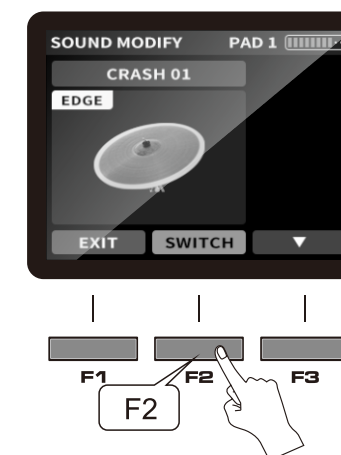
### Set SOUND interface



After selecting the timbre set, tap the striking pad you need to edit.

Select the parameters you need to adjust through the upper and lower keys, and rotate the VALUE / ENTER knob to adjust the parameter values.

When the SWITCH button appears in the selected part, click SWITCH to split the tone of the part to the percussion pad you need, such as RIDE can be split into cymbals / cymbals / cymbals.



# System function operation

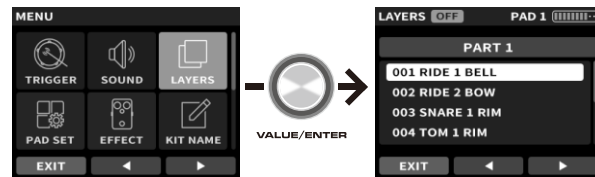
| Parameter control table |  |                                |
|-------------------------|--|--------------------------------|
| Name                    | Range                                    | Function                       |
| SOUND                   | Drum / cymbals / special tone color..... | Adjust the tone                |
| PITCH                   | -32 - 0 - 32                             | Adjust the level of parts      |
| LEVEL                   | 0-127                                    | Adjust the volume of the parts |

## LAYERS

This function only supports parameter adjustment for the 8 pads included in DP-2000 and is not valid for expansion.

### Enter the LAYERS interface

Enter the MENU to find the LAYERS through the VALUE / ENTER knob, and press the VALUE / ENTER to enter the LAYERS setting.

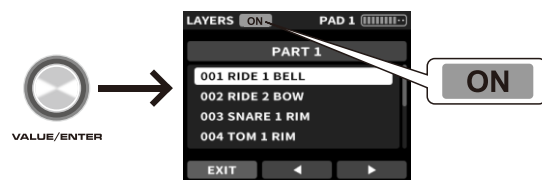


### LAYERS setting

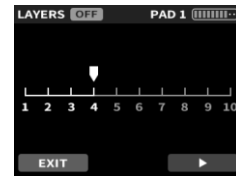
1. In this interface, you need to hit to choose the pad you want to adjust first.



2. After you confirmed the pad you want to adjust. Press the VALUE/ENTER knob to turn on the LAYERS.

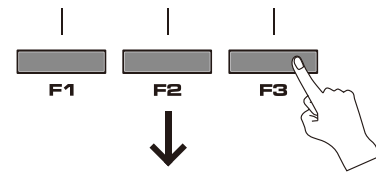


3. We divide each pad into 10 layers, and you can divide the 10 layers into any two areas, with different tones assigned to each area. Rotate the VALUE/ENTER knob to select your area.



### Tone allocation

After determining the partition, press F3 and go right to the regional tone allocation interface.

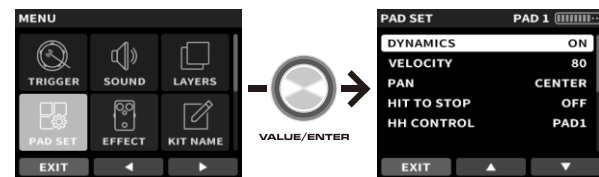


## PAD SETTING

This mode is used to adjust the settings of each pad.

### Enter PAD SET interface

Enter the MENU to find the PAD SET through the VALUE / ENTER knob, and press the VALUE / ENTER to enter the PAD SET setting.



### Set PAD SET interface

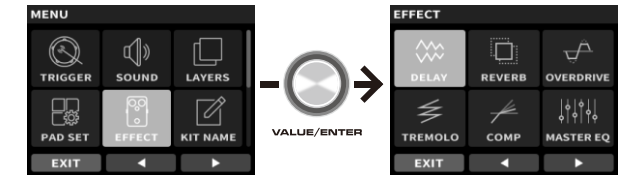
Select the parameters you want to adjust through the upper and lower keys and adjust the parameter values using the VALUE knob.

# System function operation

## EFFECT SETTING

### Enter EFFECT interface

Enter the MENU to find the EFFECT through the VALUE / ENTER knob, and press the VALUE / ENTER to enter the EFFECT setting.



### Set EFFECT interface



Open an effector, press VALUE / ENTER again to turn the effector on or off.



| Parameter control table |                    |   |
|-------------------------|--------------------|---|
| Name                    | Range              | Function  |
| DYNAMICS                | ON/OFF             | This parameter is used to adjust the trigger dynamics of the strike pad, such to ON, with 10 layers of strength dynamic tone feedback. If adjusted to OFF, this strike pad defaults to the maximum trigger strength value.  |
| VELOCITY                | 1-127              | Adjust the strength value triggered by the strike pad after closing the dynamic   |
| PAN                     | L64-CENTER<br>-R63 | Adjust the sound phase of the strike pad  |
| HIT TO STOP             | ON/OFF             | ON: After hitting a strike pad, hit the strike pad again before the sound ends, and immediately stop the sound of the strike pad.<br>OFF: After tapping a strike pad, tap the strike pad again before the sound ends, and the strike pad will be triggered repeatedly immediately. (The sound triggered by the last hit is not aborted by the second hit) |
| HH CONTROL              | PAD1-PAD8          | This parameter value is only displayed after the external hihat controller is connected. It is used to select which pad your HH controller wants to control   |
| HH SENSITIVITY          | 0-127              | This parameter value is only displayed after the external hihat controller is connected. It's used to adjust the sensitivity of the external hihat controller.  |

## Effectors list

|                                 |                                |
|---------------------------------|--------------------------------|
| <p>Global Delay effector</p>    | <p>Global Reverb effector</p>  |
| <p>Global Overload effector</p> | <p>Global Tremolo effector</p> |
| <p>Bus compression effector</p> | <p>Bus EQ effector</p>         |

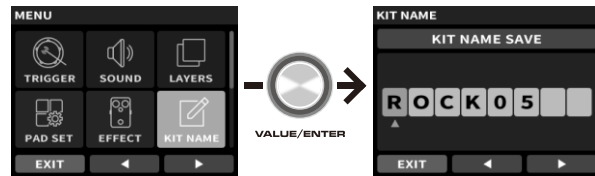


# System function operation

## KIT NAME

### Enter KIT NAME interface

Enter the MENU to find the KIT NAME through the VALUE / ENTER knob, and press the VALUE / ENTER to enter the KIT NAME setting.



### KIT NAME Group naming

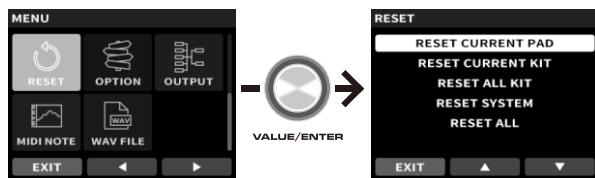
Select the character position through the left and right keys, the VALUE knob adjusts the characters.



## RESET SETTING

### Enter RESET interface

Enter the MENU to find the RESET through the VALUE / ENTER knob, and press the VALUE / ENTER to enter the RESET setting.



### Set RESET interface

Select the item you want to recover through the upper and lower keys, and press VALUE / ENTER to confirm the recovery.

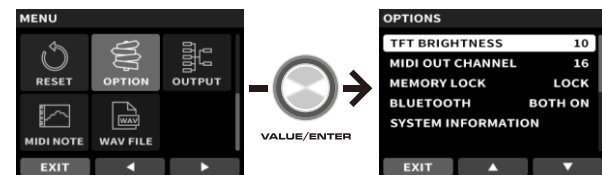


| Parameter control table |  |
|-------------------------|--|
| Name                    | Function   |
| RESET CURRENT PAD       | Restore all the parameters of the current hit pad                      |
| RESET CURRENT KIT       | Restore the parameters of the current tone set to the factory settings |
| RESET ALL KIT           | Return to all tone group parameters to factory settings                |
| RESET SYSTEM            | Restore system settings to factory settings (excluding timbre)         |
| RESET ALL               | Restore all factory-to-factory settings                                |

## OPTION SETTING

### Enter OPTION interface

Enter the MENU to find the OPTION through the VALUE / ENTER knob, and press the VALUE / ENTER to enter the OPTION setting.



### Set OPTION interface

Select the parameters you want to adjust through the upper and lower keys and adjust the parameter values using the VALUE knob



| Parameter control table |       |                                |
|-------------------------|-------|--------------------------------|
| Name                    | Range | Function                       |
| TFT BRIGHTNESS          | 1-10  | The screen displays brightness |
| MIDI OUT CHANNEL        | 1-16  | MIDI outgoing channel          |

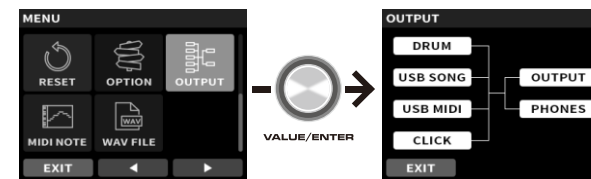
# System function operation

|                    |                               |   |
|--------------------|-------------------------------|---|
| MEMORY LOCK        | LOCK/ UNLOCK                  | Memory lock switch (parameters modified after LOCK will not be automatically saved) |
| BLUETOOTH          | OFF/AUDIO ON/MIDI ON /BOTH ON | Bluetooth switch (display after connecting with the Bluetooth module)               |
| SYSTEM INFORMATION | Unadjustable                  | System version is shown   |

## OUTPUT SETTING

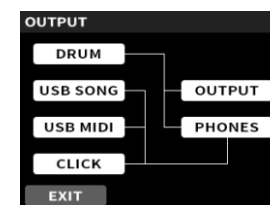
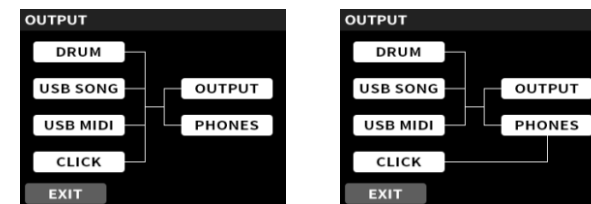
### Enter OUTPUT interface

Enter the MENU to find the OUTPUT through the VALUE / ENTER knob, and press the VALUE / ENTER to enter the OUTPUT setting.



### Select output mode

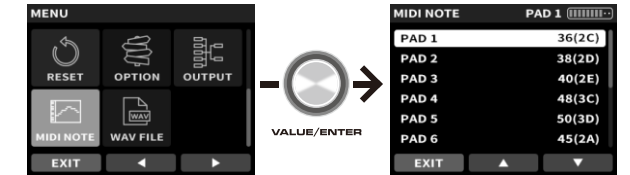
Use the left and right keys to select the output mode.



## MIDI NOTE SETTING

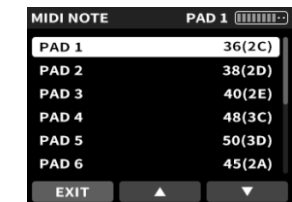
### Enter MIDI NOTE interface

Enter the MENU to find the MIDI NOTE through the VALUE / ENTER knob, and press the VALUE / ENTER to enter the MIDI NOTE setting.



### Set MIDI NOTE interface

Select the parameters you want to adjust through the upper and lower keys and adjust the parameter values using the VALUE knob.

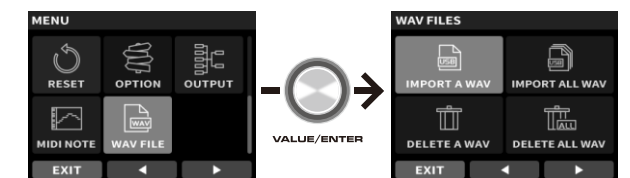


## WAV FILE SETTING

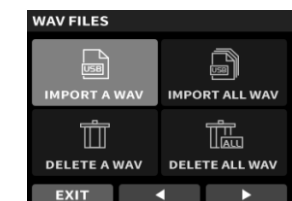
This mode needs to be used in conjunction with a USB drive, and only supports USB drives with formats FAT32 and FAT16. Before connect the USB drive to the DP-2000, you need to create a folder in the USB drive and named WAVIMPORT (capital). The WAV file placed in the USB drive must have a format of 44100Hz and 16bit. If any of the above conditions are not met, this function will not be able to be used. A single WAV file cannot exceed 20 seconds, and the file name must be in English. The total size of all WAV files cannot exceed 80m or the total number cannot exceed 80.

### Enter WAV FILE interface

Enter the MENU to find the WAV FILE through the VALUE / ENTER knob, and press the VALUE / ENTER to enter the WAV FILE setting.



### Set WAV FILE interface



# System function operation

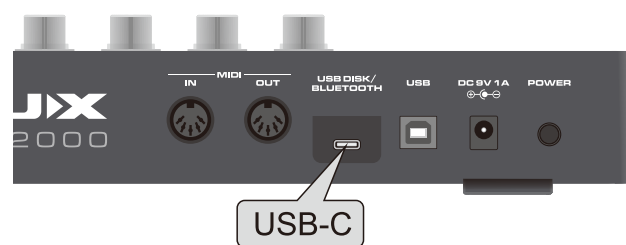
Use the left and right or VALUE knob to select content and press ENTER to enter.

Supports simultaneous import of single or multiple tone files using PLAY / STOP. The tone sounds after successful import will be found under the SOUND function interface and assigned to any percussion pad for performance.

Under this function, you can also delete the imported timbre in a single or batch.

Under the IMPORT A WAV list interface, you can try out the tone of the U disk through the PLAY / STOP button.

## USB DISK/BLUETOOTH



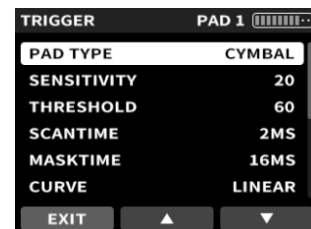
The USB-C (USB DISK / BLUETOOTH) interface of the back panel is the U-disk / Bluetooth module interface. Both can only connect one, do not use the expansion device to connect the U disk and Bluetooth module. When connected to the Bluetooth module, you can use the mobile phone / pad connected to the DP-2000 Bluetooth to play music.

## EXPAND THE SETTING

The DP-2000 back panel has three expanded interfaces: TRIGGER, HH CTRL and KICK.



**TRIGGER** You can access any single cymbals or a single electronic strike pad, and then select the device you access through the TRIGGER interface PAD TYPE under the menu. If the cymbals, select CYMBAL, if the drum, select DRUM PAD.



# Specifications

- **Display:** TFT LCD color screen
- **Tones:** 20 preset
- **Effect:** Delay, Reverb, Overdrive, Tremolo, Compressor, Master EQ
- **Pad:** 8 single zone pads
- **Interface:** USB
  - USB DISK/BLUETOOTH
  - MIDI OUT
  - MIDI IN
  - TRIGGER IN
  - HH CTRL(HIHAT CONTROL)
  - KICK
  - OUTPUT L/MONO
  - OUTPUT R
  - PHONES
  - AUX IN
  - DC IN 9V
- **USB:** WAV IMPORT, USB BLUETOOTH, USB DISK
- **Dimensions:** 408mm(L) x 314mm(W) x 62mm(H)
- **Weight:** 2.8 kg

## Accessories

- User manual
- NUX Sticker
- Warranty card
- Sticks
- Mounting bracket
- Power adapter
- 6.35mm Patch cable
- NBT-1 Bluetooth Audio & MIDI Adaptor

\* Specification may change without notice.

© Cherub Technology Co., Ltd.

All Rights Reserved. No part of this publication may be reproduced, stored in a retrieval system, or transmitted, in any form or by any means, electronic, mechanical, photocopying, recording, or otherwise, without the prior written permission of Cherub Technology Co., Ltd.



Made in China

# 安全使用本设备

为了避免火灾、电击以及人身伤害，请遵循以下指示。

- 将本设备的电源接口与带有接地保护的电源插座连接。
- 请勿自行拆卸或改动本设备的任何内置部件。
- 请勿尝试修理或更换本设备零件（除非本说明书提供有安装选购配备的指示）。如需修理或更换本设备零件，请就近洽询NUX服务中心或NUX授权经销商。
- 请勿将本设备放置在以下场所：
  - 温度过高的场所（例如：阳光直射下的封闭车辆中、热输送管附近或发热机器的上方）。
  - 潮湿处（例如：浴室、洗手间或潮湿的地面）。
  - 湿气重的地方。
  - 直接遭雨淋的地方。
  - 灰尘多的地方。
  - 有强烈震动的地方。
- 请将本设备放置于平坦之处以确保其稳固。请勿将本设备放置于可能会摇晃的支架上或是倾斜之处。
- 当发生以下情况时，请立即关闭电源，拔掉插头并与当地NUX服务中心或NUX授权经销商联系：
  - AC适配器、电源线或是插头破损。
  - 出现冒烟或发出异味。
  - 异物或液体掉入或渗入本设备。
  - 本设备直接遭雨淋或打湿。
  - 本设备操作不正常或是表现有明显的变化。
- 请注意家中的孩童。成人应监督孩童行为，直到他有能力遵循必要的安全指示操作本设备。
- 本设备必须连接操作说明中指示的和本设备背面注明的供电装置。
- 请使用本设备附属的电源导线。附属的电源导线请勿用于其它的设备。
- 电源线请勿过度扭曲或弯折，也不可以在上面放置重物。这样可能会损坏电源线而造成元器件断裂与短路。损坏的电线可能造成火灾和触电的危险！
- 无论单独使用本设备或连接使用放大器、音箱或耳机时，过大的音量可能会导致听力永久的损害。请勿长期在过大音量或任何会导致不适的音量下使用。如果您感到任何听力的损失或产生耳鸣，请停止使用并迅速求诊。
- 请勿将任何物品（如易燃物、硬币、别针等）或任何液体（水、饮料等）掉入或渗入本设备中。
- 避免强烈的碰撞。（请勿摔落！）
- 请勿将过多的电器与本设备共用一个插座。在使用延长线时，请特别注意您连接在延长线上的所有设备，其总功率绝对不可超过延长线所能承受的功率。电流的超载会导致导线发热并溶解包覆电线的绝缘物质。
- 在国外使用本设备之前，请与当地NUX服务中心或NUX授权经销商联系。

- 请勿将盛有水的容器（如花瓶）或饮料放置在本设备上。盛有杀虫剂、香水、酒精、指甲油或喷雾剂的容器也不要放置在本设备上。请使用柔软的干布擦拭溅到本设备上的液体。
- 请将本设备和AC适配器放置在不影响其良好通风的场所或方向。
- 将AC适配器的插头插入或拔离插座时，请用手拿本设备电源线的插头部分。
- 每隔一段时间，您必须将AC适配器的电源插头拔掉并用干布擦拭和清除累积于插头的灰尘。当长期不使用本设备时，也将电源插头拔离插座。在电源插头与电源插座之间沉积的灰尘可能会使绝缘不良而导致火灾。
- 请避免电源线与各种导线相互缠绕。此外，也请让孩童远离电源线与导线。请勿踩踏在本设备上，也不要将重物放置在本设备上。
- 手部潮湿时，请勿拿取本设备的电源线或将AC适配器的插头插入或拔离插座。
- 移动设备之前，请拔下AC适配器连接线 and 所有与本设备连接的外置设备连线。
- 清洁本设备之前，请关闭电源并从插座上拔下AC适配器连接线。
- 若怀疑您的地区可能发生雷击时，请将电源插头拔掉。

控制面板 .....04

    正面面板 .....04

    背面面板 .....05

连接音频设备 .....06

关于屏幕 .....07

准备演奏 .....08

    开启/关闭电源 .....08

    演奏方式 .....08

音色操作和音色整体切换 .....08

    音色操作 .....08

    音色整体切换 .....08

效果器发送功能操作 (EFX) .....09

节拍器 .....09

乐曲功能操作 .....10

录音功能操作 .....10

系统功能操作 .....12

    触发设置 .....12

    音色调整 .....12

    音色分层 .....13

    打击垫设置 .....13

    效果器设置 .....14

    鼓组命名 .....15

    恢复出厂设置 .....15

    系统设置 .....15

    输出设置 .....16

    MIDI设置 .....16

    WAV设置 .....16

    USB DISK/BLUETOOTH .....17

    拓展设置 .....17

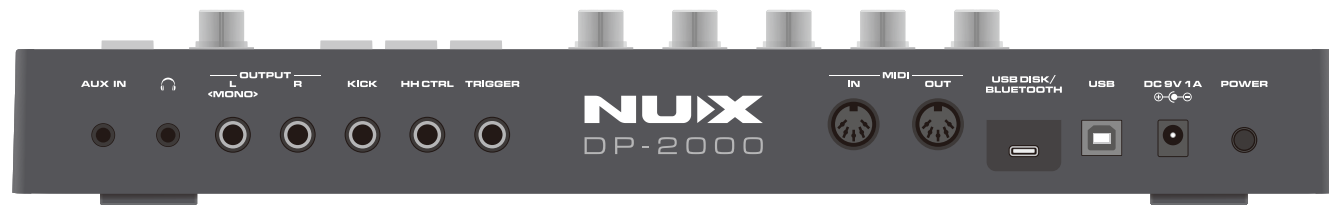
技术规格 .....18

■ 正面面板

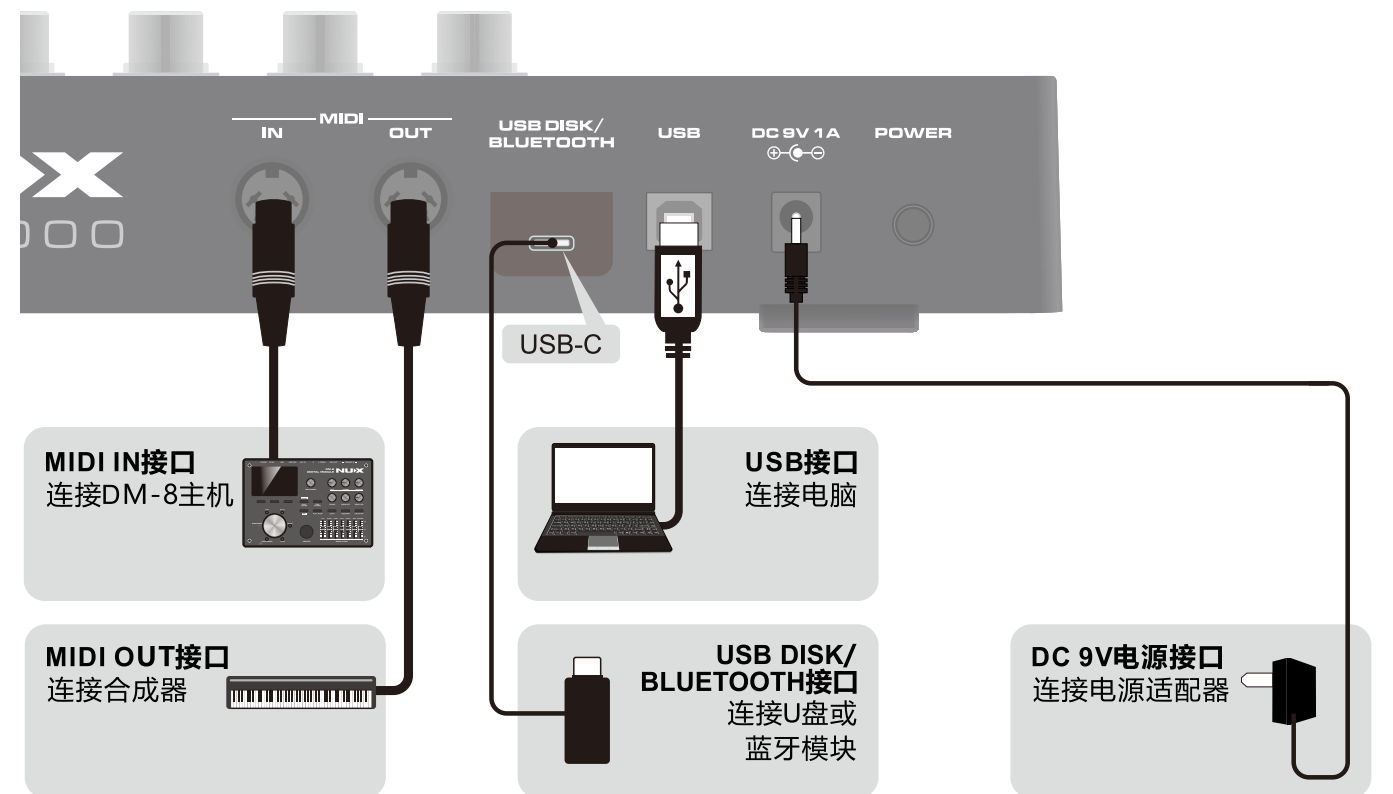
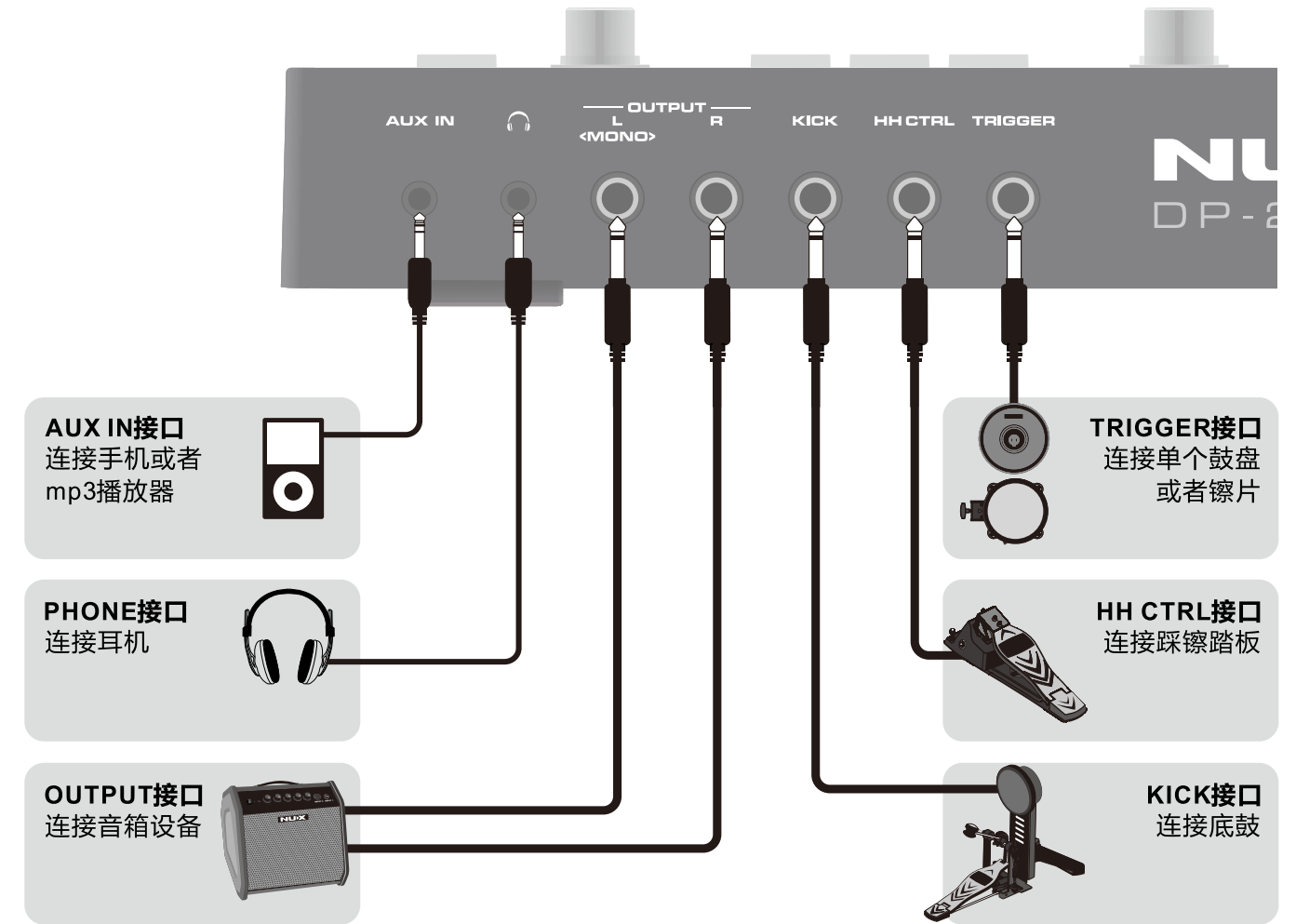


|  |  |   |  |
|--|--|---|--|
| <b>MASTER旋钮</b><br>总输出音量控制旋钮                               | <b>PHONES旋钮</b><br>耳机输出音量控制旋钮            | <b>TEMPO旋钮</b><br>节拍器速度调节旋钮                 | <b>FX 1旋钮</b><br>效果器组1发送量调节旋钮 (需要配合FX1开关使用, FX1关闭时, 此旋钮无效) |
| <b>FX 2旋钮</b><br>效果器组2发送量调节旋钮 (需要配合FX2开关使用, FX2关闭时, 此旋钮无效) | <b>MUTE按键</b><br>全局静音按键 (包括总输出音量和耳机输出音量) | <b>KIT按键</b><br>鼓组选择按键 (任何模式下按此键直接跳到鼓组选择界面) | <b>CLICK按键</b><br>节拍器开关按键                                  |
| <b>FX 1按键</b><br>效果器组1开关按键                                 | <b>FX 2按键</b><br>效果器组2开关按键               | <b>F1 F2 F3按键</b><br>屏幕下方多功能按键              | <b>VALUE/ENTER旋钮</b><br>参数调节与确认旋钮 (旋转调节参数, 按下确认)           |
| <b>REC按键</b><br>录音功能按键 (需配合U盘使用)                           | <b>SONG按键</b><br>乐曲功能按键 (需配合U盘使用)        | <b>PLAY/STOP按键</b><br>播放与暂停按键 (播放与暂停U盘内容)   |  |

## ■ 背面面板



|                                 |  |   |                                    |
|---------------------------------|--|---|------------------------------------|
| <b>AUX IN接口</b><br>3.5mm外部音频接口  | <b>PHONE接口</b><br>3.5mm耳机接口              | <b>OUTPUT/MONO接口</b><br>6.35mm左/单声道输出接口 | <b>OUTPUT R接口</b><br>6.35mm右声道输出接口 |
| <b>KICK接口</b><br>外接底鼓接口         | <b>HH CTRL接口</b><br>外接踩镲控制器接口            | <b>TRIGGER接口</b><br>拓展接口                | <b>MIDI IN接口</b><br>MIDI信号输入接口     |
| <b>MIDI OUT接口</b><br>MIDI信号输出接口 | <b>USB DISK/BLUETOOTH接口</b><br>U盘或蓝牙模块接口 | <b>USB接口</b><br>USB输出接口                 | <b>DC 9V电源接口</b><br>电源适配器接口        |
| <b>POWER按键</b><br>电源开关按键        |  |   |                                    |





|   |  |   |  |
|---|--|---|--|
| <br>10级力度显示        | PAD 1<br>当前打击垫显示   | <br>蓝牙连接图标           | <br>USB连接图标 |
| <br>U盘连接图标         | <br>记忆锁开启图标   | <br>录音图标             | 节拍速度 220<br>节拍器速度显示  |
| <br>节拍器<br>节拍器功能设置 | <br>菜单<br>主菜单 | <br>效果组<br>效果器组分配设置 |  |

### 开启/关闭电源



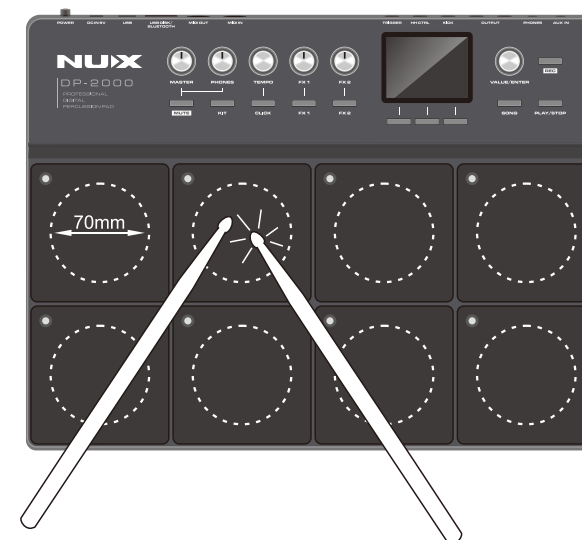
#### ■ 开启电源

- 1.将MASTER和PHONES旋钮调至最低档位。
- 2.将外置放大器/耳机/音响等设备的音量调至最小。
- 3.按下电源开关按键，打开电源。  
**\*打开电源时，可能听到微弱的声响，这属于正常现象，并非故障。**
- 4.敲击打击垫，根据您的需要提高MASTER/PHONES/外接播放设备的音量。

#### ■ 关闭电源

- 1.将外置放大器/耳机/音响等设备的音量调至最小。
- 2.按下电源开关按键，关闭电源。

### 演奏方式



用鼓棒敲击打击垫中心的方式演奏。

上图中方块我们称为打击垫。以其正中心为圆心，直径为70mm的范围内是打击垫的最佳打击范围。

### 音色操作和音色整体切换

开机即进入KIT模式。



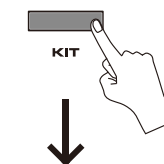
#### 音色操作

转动VALUE/ENTER旋钮选择您想要的声音组即可。



#### 音色整体切换

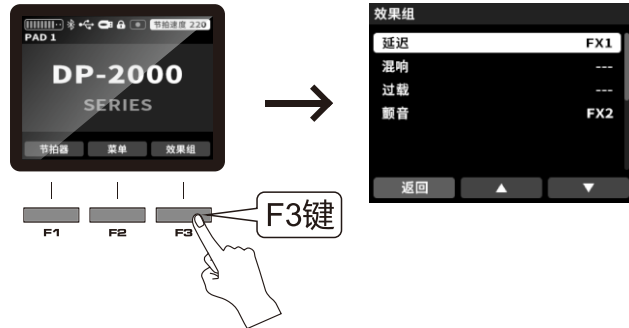
在任何模式下，按下KIT键则直接回到KIT选择模式。



## 效果器发送功能操作

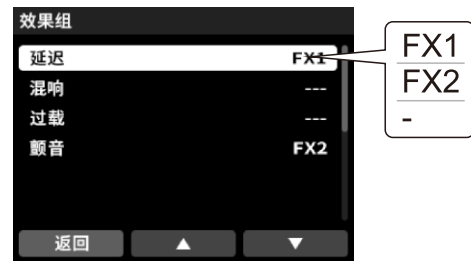
### 进入效果组界面

在主界面下, 按F3键[效果组]进入效果组界面, 如下图所示:

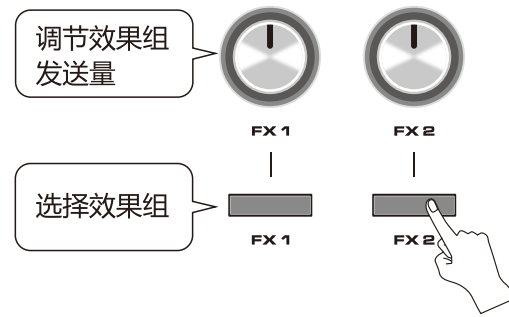


### 发送效果器

1. 在此模式下, 通过上下键选择您要发送的效果器, 通过VALUE旋钮选择将其分配至FX1组或是FX2组或是不分配“-”。



2. 当确定将其分配后, 按面板上的FX1/FX2键将其点亮, 然后通过FX1/FX2旋钮调节该组的发送量。

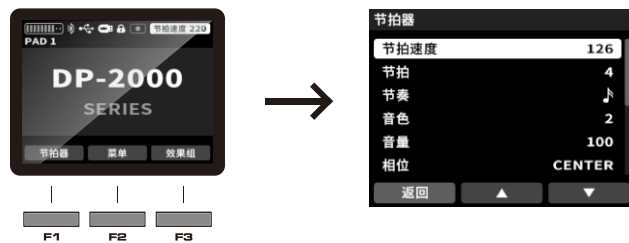


- 可同时将多个效果分配至同一组, 然后通过FX旋钮统一调节总发送量。
- 如FX1或者FX2无效果分配, 则面板上的FX1/FX2按键不可以点亮, 操作无效。

## 节拍器

### 进入节拍设置界面

在主界面下, 按F1键[节拍器]进入节拍器设置, 如下图所示:



### 设置节拍器

进入后, 通过上下键选择您需要调整的参数, 使用VALUE/ENTER旋钮进行参数调节。



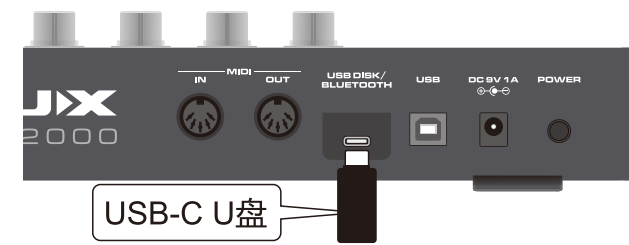
| 节拍器调节参数列表 |                           |       |
|-----------|---------------------------|-------|
| 参数名称      | 调整范围                      | 参数说明  |
| 节拍速度      | 40-280                    | 速度调节  |
| 节拍        | 1-9                       | 拍子    |
| 节奏        | 4分音符/8分音符/<br>16分音符/8分3连音 | 节奏型   |
| 音色        | 1-6                       | 节拍器音色 |
| 音量        | 0-127                     | 节拍器音量 |
| 相位        | L64-CENTER-R63            | 节拍器声相 |

## 乐曲功能操作

此模式需要与U盘结合使用, 并且仅支持FAT32和FAT16格式的U盘。放置在U盘中的WAV文件必须具有44100Hz和16位的格式。如果不满足上述任何条件, 此功能将无法使用。

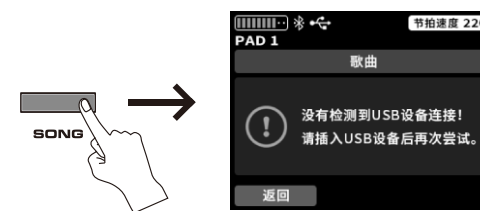
### 创建目录

使用前, 需在U盘内创建一个名为SONG (大写) 的文件夹, 把WAV格式的歌曲文件放入U盘的SONG文件夹中 (仅支持wav格式)。

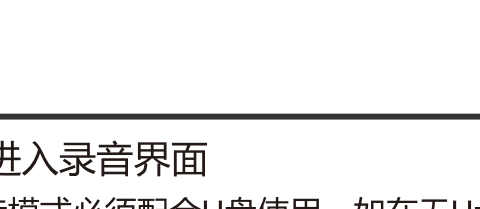


### 进入歌曲界面

无U盘连接状态下, 按下面板的SONG按键会显示如下界面:

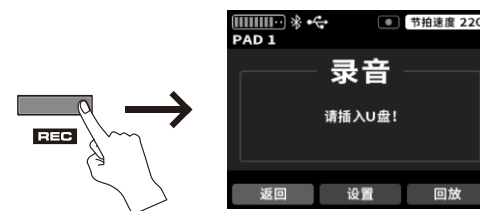


若U盘内无WAV文件或者文件夹创建有误, 则显示如下界面:

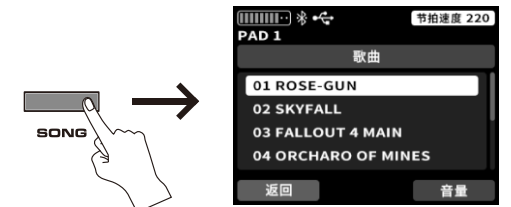


### 进入录音界面

录音模式必须配合U盘使用, 如在不U盘接入的情况下按下REC按键, 显示如下界面:

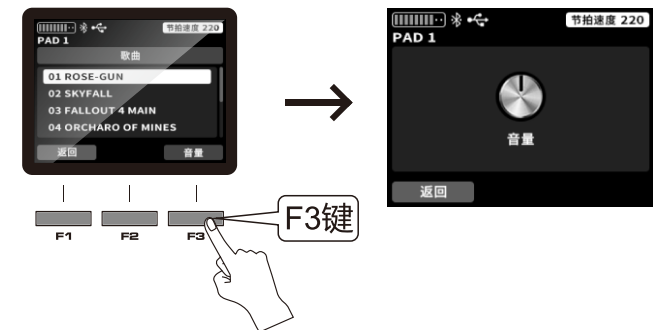


若U盘已准备好, 按下面板上的SONG按键, 则直接进入歌曲选择界面:



### 歌曲界面操作

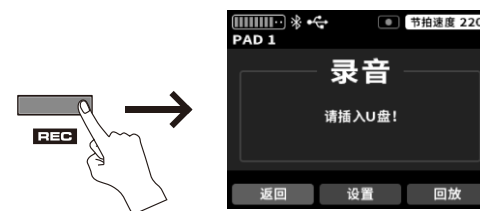
在歌曲界面下, 通过VALUE/ENTER旋钮选择曲目, 按PLAY/STOP按键播放或暂停乐曲。按下[音量]对应的F3按键, 进入乐曲音量调节界面, 使用VALUE/ENTER旋钮可调节乐曲音量。



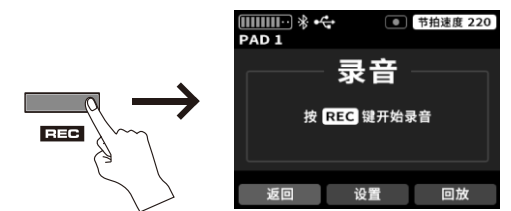
## 录音功能操作

### 进入录音界面

录音模式必须配合U盘使用, 如在不U盘接入的情况下按下REC按键, 显示如下界面:



当正确连接U盘后, 按下REC按键, REC按键长亮并进入录音模式, 如右图:



进入录音模式

## 开始\停止录音

在录音模式下，再次按下REC按键开始录音，按下F3按键停止录音。



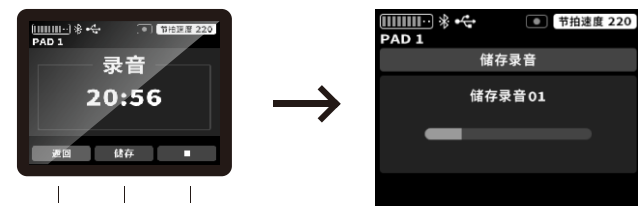
开始录音



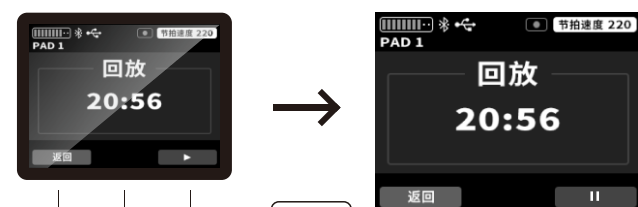
停止录音

## 保存\播放录音

录音停止后，可选择播放刚才的录音或者保存刚才的录音。如选择保存录音，则刚才的录音将会保存在U盘的SONG文件夹内。



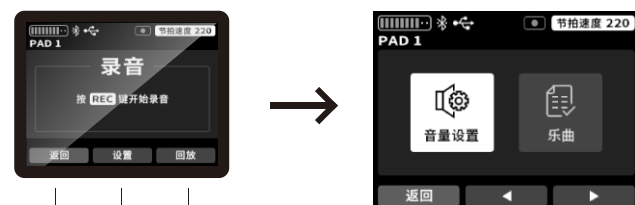
保存录音



播放录音

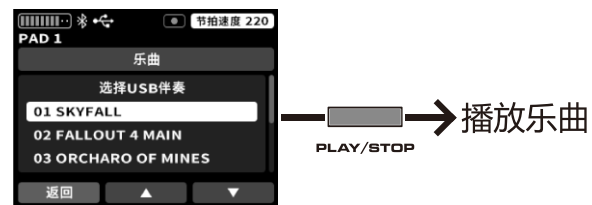
## 录音界面设置

在录音主界面下，按F2[设置]键可进入录音设置和录音列表界面。



- [音量设置]项用于调节伴奏曲和DRUM PAD的音量平衡。
- [乐曲]项为已保存的录音内容列表。

在乐曲界面下，显示U盘所存储的乐曲，您可以跟随乐曲进行演奏。按下PLAY/STOP按键可播放U盘内的乐曲，若在乐曲开始播放后再按下REC按键则开始录音，并跳转至录音中界面，同时乐曲和演奏内容会被同时录入。



乐曲界面播放乐曲

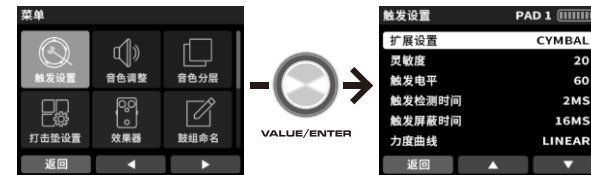


从乐曲界面进入录音状态

## 触发设置

### 进入触发设置界面

在菜单界面转动VALUE/ENTER旋钮找到触发设置，按下VALUE/ENTER旋钮进入到触发设置界面。



### 设置触发参数



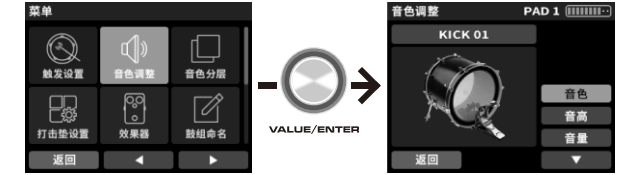
此界面用于调整每个打击垫的灵敏度和其他参数，通过上下键选择您要调整的参数，使用VALUE/ENTER旋钮调整参数值。

| 触发调节参数列表 |                         |   |
|----------|-------------------------|---|
| 参数名称     | 调整范围                    | 参数说明  |
| 扩展设置     | CYMBAL/<br>DRUM PAD     | 此功能仅在使用拓展部件后生效，若拓展部件为镲片，则选CYMBAL，带静音功能；若为鼓盘则选DRUM PAD |
| 灵敏度      | 1-99                    | 调节打击垫灵敏度  |
| 触发电平     | 1-99                    | 调节打击垫触发电平   |
| 触发检测时间   | 1MS-8MS                 | 调节触发信号检测时间  |
| 触发屏蔽时间   | 4MS-64MS                | 调节触发信号屏蔽时间  |
| 力度曲线     | LINEAR/EXP/<br>LOG/LOUD |   |
| 信号误触值    | 0-99                    | 调节触发信号重复触发值   |
| 串扰值      | 0%-80%                  | 调节交叉串扰值   |

## 音色调整

### 进入音色调整界面

在菜单界面转动VALUE/ENTER旋钮找到音色调整，按下VALUE/ENTER旋钮进入到音色调整界面。



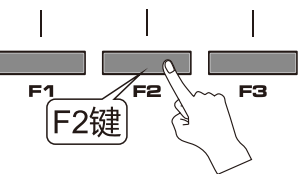
### 设置音色调整界面



选定音色组后，通过敲击选择您需要编辑的打击垫。

通过上下键选择您所需调整的参数，旋转VALUE/ENTER旋钮调整参数值。

当所选部件出现[触发切换]键时，按F2 [触发切换]键可拆分该部件的音色分配至您所需的打击垫中，比如RIDE可以拆分成镲边/镲面/镲帽。





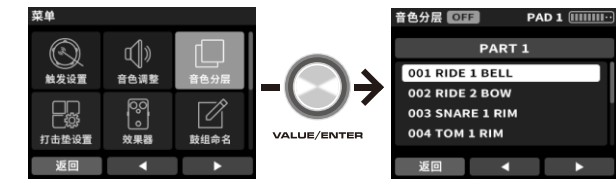
| 音色调节参数列表 |               |        |
|----------|---------------|--------|
| 参数名称     | 调整范围          | 参数说明   |
| 音色       | 鼓/镲/特殊音色..... | 调整音色   |
| 音高       | -32 - 0 - 32  | 调整部件音高 |
| 音量       | 0-127         | 调整部件音量 |

## 音色分层

此功能仅支持DP-2000中包含的8个打击垫的参数调整，不适用于扩展。

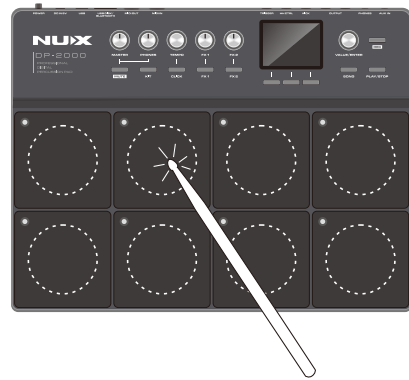
### ■ 进入音色分层界面

在菜单界面旋转VALUE/ENTER旋钮找到音色分层，按下VALUE/ENTER旋钮进入音色分层界面。



### ■ 音色分层设置

1. 在这个界面中，您需要通过敲击打击垫来选择您想要调整的打击垫。



2. 选择要调整的打击垫，按下VALUE/ENTER键打开音色分层。

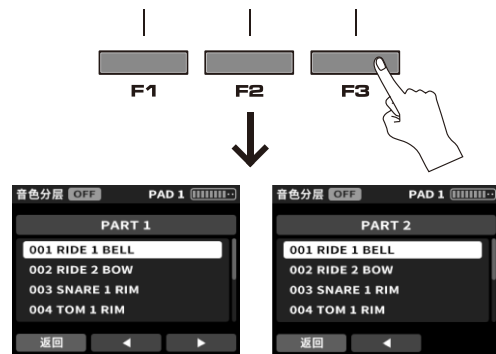


3. 我们把每个打击垫分成10层，您可以把这10层分成任意两个区域，每个区域都有不同的音色。旋转VALUE/ENTER旋钮以选择您的区域。



### ■ 音色分配

确定分区后，按F3键进入区域音色分配界面。

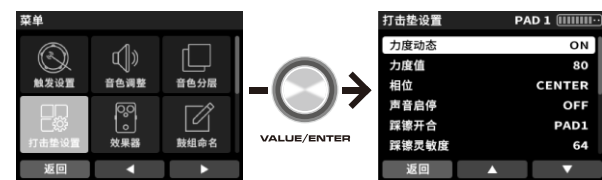


## 打击垫设置

此模式用于调整每个打击垫的设置。

### ■ 进入打击垫设置界面

在菜单界面旋转VALUE/ENTER旋钮找到打击垫设置项，按下VALUE/ENTER旋钮进入打击垫设置界面。



### ■ 设置打击垫参数

通过F2 (上)、F3 (下) 键选择您要调节的项目，使VALUE/ENTER旋钮调整该项目的参数值。

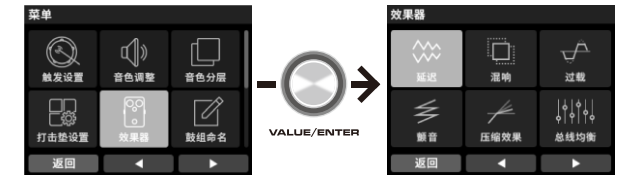


| 打击垫调节参数列表 |                    |   |
|-----------|--------------------|---|
| 参数名称      | 调整范围               | 参数说明  |
| 力度动态      | ON/OFF             | 此参数用于调整打击垫的触发动态，如调整至ON，则此打击垫有10层力度动态音色反馈。如调整至OFF，则此打击垫默认为最大触发力度值。   |
| 力度值       | 1-127              | 调整打击垫在关闭动态后所触发的力度值。   |
| 相位        | L64-CENTER<br>-R63 | 调整打击垫的声相。   |
| 声音启停      | ON/OFF             | ON: 在敲击某个打击垫后，在声音结束前，再次敲击该打击垫，则立刻中止该打击垫的声音。<br>OFF: 在敲击某个打击垫后，在声音结束前，再次敲击该打击垫，则会立刻重复触发该打击垫的声音。<br>(上一次击打所触发的声音不会因为再次击打而中止)。 |
| 踩镲开合      | PAD1-PAD8          | 此参数值仅在外接踩镲控制器后才显示，用于控制打击垫踩镲音色的开合。   |
| 踩镲灵敏度     | 0-127              | 此参数值仅在外接踩镲控制器后才显示，用于调整踩镲控制器的灵敏度。  |

## 效果器设置

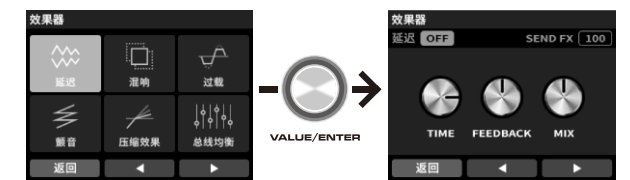
### ■ 进入效果器设置界面

在菜单界面通过VALUE/ENTER旋钮找到效果器项，按下VALUE/ENTER旋钮进入效果器设置界面。



### ■ 设置效果器参数

按F2 (左)、F3 (右) 键选择您要调节的效果器，按VALUE/ENTER旋钮进入该效果器参数设置界面，再次按下VALUE/ENTER旋钮可以选择开启或关闭该效果器，按F2 (左)、F3 (右) 键选择您要调节的项目，转动VALUE/ENTER旋钮设置该项目的参数。



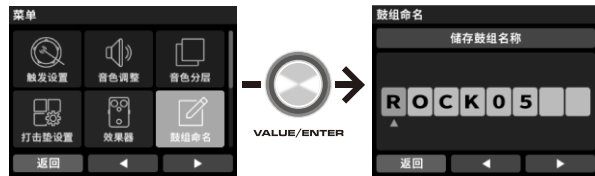
## 全局效果器列表

|                    |                    |
|--------------------|--------------------|
| <b>全局延迟效果器</b><br> | <b>全局混响效果器</b><br> |
| <b>全局过载效果器</b><br> | <b>全局颤音效果器</b><br> |
| <b>总线压缩效果器</b><br> | <b>总线EQ效果器</b><br> |

## 鼓组命名

### 进入鼓组命名界面

在菜单界面旋转VALUE/ENTER旋钮找到鼓组命名项，按下VALUE/ENTER旋钮进入设置界面。



### 鼓组命名

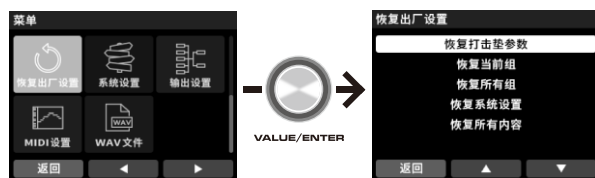
进入鼓组命名界面后，按F2（左）、F3（右）按键选择字符位置，转动VALUE/ENTER旋钮调整字符，调整完后退出界面，鼓组名称自动保存。



## 恢复出厂设置

### 进入恢复出厂设置界面

在菜单界面旋转VALUE/ENTER旋钮找到恢复出厂设置项，按下VALUE/ENTER旋钮进入恢复出厂设置界面。



### 设置恢复出厂设置界面

通过上下键选择您要恢复的项目，按下VALUE/ENTER旋钮确认恢复。



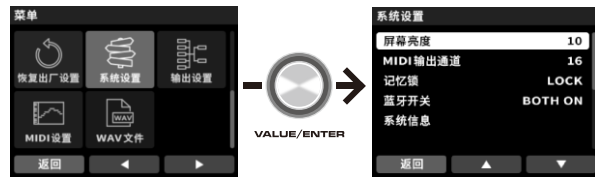
## 恢复出厂设置界面各项说明

| 项目      | 说明            |
|---------|---------------|
| 恢复打击垫参数 | 重置当前打击垫的参数    |
| 恢复当前组   | 重置当前音色组的参数    |
| 恢复所有组   | 重置所有音色组的参数    |
| 恢复系统设置  | 重置系统设置(不包括音色) |
| 恢复所有内容  | 重置所有参数        |

## 系统设置

### 进入系统设置界面

在菜单界面旋转VALUE/ENTER旋钮找到系统设置项，按下VALUE/ENTER旋钮进入系统设置界面。



### 设置系统设置界面

通过上/下键选择您要调整的参数，旋转VALUE/ENTER旋钮调整参数值。



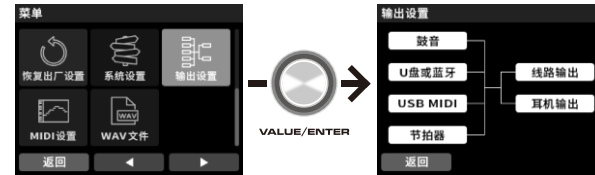
## 系统设置参数列表

| 参数名称     | 调整范围                                | 参数说明                   |
|----------|-------------------------------------|------------------------|
| 屏幕亮度     | 1-10                                | 屏幕显示亮度                 |
| MIDI输出通道 | 1-16                                | MIDI输出通道               |
| 记忆锁      | LOCK/<br>UNLOCK                     | 记忆锁开关（锁定后修改的参数将不会自动保存） |
| 蓝牙开关     | OFF/AUDIO<br>ON/MIDI ON<br>/BOTH ON | 蓝牙开关（需接上蓝牙模块后显示）       |
| 系统信息     | 不可调节                                | 系统版本显示                 |

## 输出设置

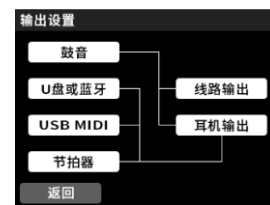
### 进入输出设置界面

在菜单界面旋转VALUE/ENTER旋钮找到输出设置项，按下VALUE/ENTER旋钮进入输出设置界面。



### 选择输出模式

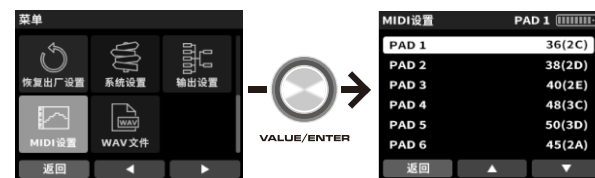
使用左/右键选择输出模式，共有三种输出模式供您选择，如下图所示：



## MIDI设置

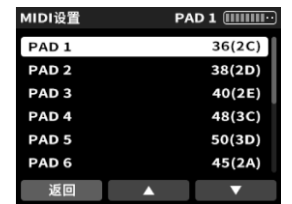
### 进入MIDI设置界面

在菜单界面旋转VALUE/ENTER旋钮找到MIDI设置项，按下VALUE/ENTER旋钮进入MIDI设置界面。



### MIDI设置界面

通过上/下键选择您要调整的参数，旋转VALUE/ENTER旋钮调整参数值。

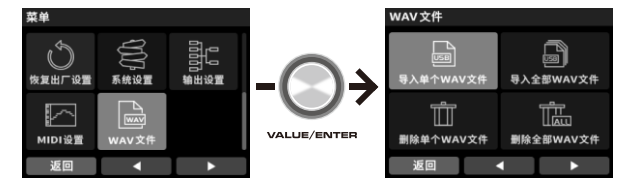


## WAV文件设置

此模式需要与U盘结合使用，并仅支持FAT32和FAT16格式。将U盘连接到DP-2000之前，您需要在U盘中创建一个名为WAVIMPORT（大写）的文件夹。放置在U盘文件夹中的WAV文件必须具有44100Hz和16位的格式。如果不满足上述任何条件，此功能将无法使用。单个WAV文件不能超过20秒且文件名必须为英文。所有WAV文件的总大小不能超过80m，或者总数不能超过80。

### 进入WAV文件设置界面

在菜单界面旋转VALUE/ENTER旋钮找到WAV文件项，按下VALUE/ENTER旋钮进入WAV文件设置界面。



### 设置WAV文件界面项



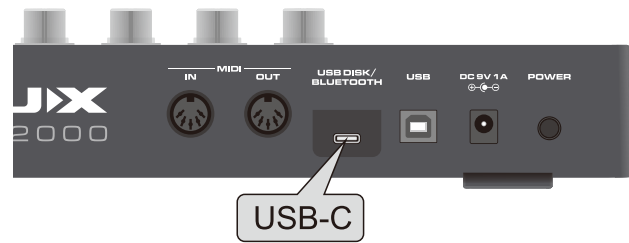
使用左/右键或者旋转VALUE/ENTER旋钮选择内容，按VALUE/ENTER旋钮进入选择的项目。

本机支持单个或者多个音色文件同时导入，可使用PLAY/STOP按键进行音色试听。导入成功后的音色会在音色调整界面下找到，并将其分配至任何打击垫进行演奏。

在此功能下，也可以单个或者批量删除已导入的音色。

在[导入单个WAV文件]界面下，可以通过PLAY/STOP按键试听U盘内的音色。

USB DISK/BLUETOOTH



背板的USB-C (USB DISK/BLUETOOTH) 接口为U盘/蓝牙模块接口。二者只能接其一，不得使用拓展设备的同时接U盘和蓝牙模块。

当连接蓝牙模块后，可使用手机/Pad连接DP-2000的蓝牙来播放音乐。

拓展设置

DP-2000背板上有KICK、HH CTRL、TRIGGER三个拓展接口。



TRIGGER接口可接入任何单个镲片或者单个电子打击垫，通过触发设置界面[扩展设置]项选择您接入的设备类型。接入镲片选CYMBAL，若接入为鼓盘则选DRUM PAD。



- **显示:** TFT 液晶彩屏
- **音色:** 20组预设
- **效果器:** Delay, Reverb, Overdrive, Tremolo, Compressor, Master EQ
- **打击垫:** 8个单触发打击垫
- **接口:** USB接口  
 USB DISK接口/蓝牙接口  
 MIDI OUT接口  
 MIDI IN接口  
 TRIGGER IN接口  
 踩镲控制器接口  
 底鼓接口  
 OUTPUT接口  
 耳机接口  
 AUX IN接口  
 DC IN 9V接口
- **USB:** WAV import接口, USB蓝牙模块接口, U盘接口
- **体积:** 408mm(L) x 314mm(W) x 62mm(H)
- **重量:** 2.8 kg

随机附件

- 使用说明书 • 保修卡 • NUX贴纸 • 鼓棒 • 安装底座 • 6.35mm音频线 • 电源适配器
- NBT-1蓝牙音频 & MIDI适配器

\*技术规格如有变更恕不另行通知。

## 有关产品中所含有害物质限量的说明

为了控制和减少电器电子产品废弃后对环境造成的污染，本资料就本公司产品中所含的特定有害物质限量及其安全性予以说明。

本资料适用于2022年12月31号以后本公司所制造的产品。

### 环保使用期限



此标志适用于在中国国内销售的电子信息产品，表示环保使用期限的年数。所谓环保使用期限是指在制造日起的规定期限内，产品中所含的有害物质不致引起环境污染，不会对人身、财产造成严重的不良影响。环保使用期限仅在遵照产品使用说明，正确使用产品的条件下才有效。不当的使用，将会导致有害物质泄漏的危险。

### 产品中所含有害物质限量说明

| 项目                   | 限量 |    |
|----------------------|----|----|
|                      | A类 | B类 |
| 邻苯二甲酸酯类物质的限量         | ○  | ○  |
| 多环芳烃类物质的限量           | ○  | ○  |
| 可迁移元素物质的限量           | ○  | ○  |
| 苯系物、总挥发有机化合物及甲醛物质的限量 | ○  |    |
| 五氯苯酚 (PCP) 物质的限量     | ○  |    |
| 电子部件限用物质的限量          | ○  |    |
| 天然放射性核素的限量           | ○  |    |

\*上表当中的信息依据GB 28489-2022仅在产品含有其中限量要求项目时适用。

本表格依据GB 28489-2022的规定编制。

○表示该有害物质在该部件所有均质材料中的含量均在GB 28489-2022第五章规定的限量要求以下。

#### 保护环境

如果需要废弃本产品，请遵循本地相关指引，请勿随意丢弃或作为生活垃圾处理，以避免对环境造成污染。

## 质量承诺

亲爱的NUX用户：

在您使用NUX产品时，请仔细参阅产品说明书，当您有疑问和困难时，请拨打售后服务热线：**400-990-9866**

- 一周内出现质量问题可退货退款
- 一年内出现质量问题可免费维修
- 一月内出现质量问题可调换
- 终身享有咨询和维修服务

[ 请向销售商索取正规发票并予以保存 ]

## 换修政策

### 一、包换政策：

- 1、消费者通过正规授权渠道购买的产品，自购机之日起1个月之内，在正常使用情况下出现非人为的产品性能故障、且产品外观及包装保持完好，可向所购机的经销商换机。
- 2、消费者在换机时应出示由经销商开出的购机凭证，否则经销商可以不予更换。

### 二、保修政策：

- 1、消费者通过正规授权渠道购买的产品(以发票所示销售方为准)，自购买之日起1年内，若出现非人为损坏的性能故障，可享受免费维修服务。
- 2、对于超过1年或人为及不可抗力因素造成损坏的产品，我司可提供有偿维修服务。

\*本售后政策仅适用于中国大陆地区，其它国家及地区以当地售后政策及法律法规为准。

### 售后服务地址

广东省珠海市高新区唐家湾镇科技九路10号 邮编:519080  
珠海市蔚科科技开发有限公司 售后服务部

### 合格证

Certificate

检验员  
Inspector

名称  
Name

专业数字打击垫

生产日期  
Date

型号  
Type

DP-2000

本产品经检验合格  
This product is inspected and approved.

执行标准: Q/WKDZ 003-2020  
Product is certificated with Q/WKDZ 003-2020

制造商: 珠海市蔚科科技开发有限公司 生产商: 珠海市蔚科科技开发有限公司 地址: 珠海市高新区唐家湾镇科技九路10号

电话: 0756-3689 866 网址: cn.nuxaudio.com