

NUX

NTK™ Series
DAW Setup Guide

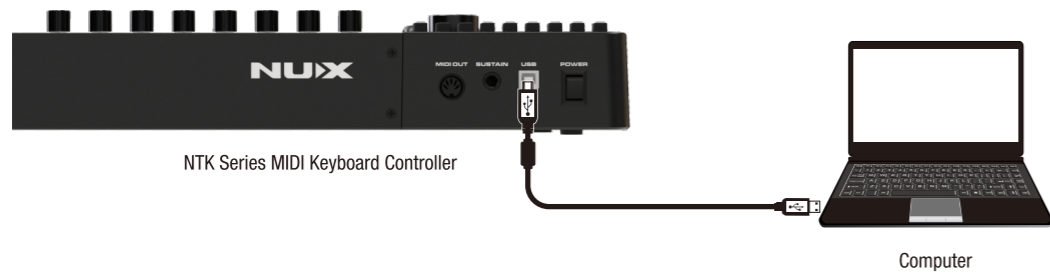


NTK™ Series
MIDI Keyboard Controller

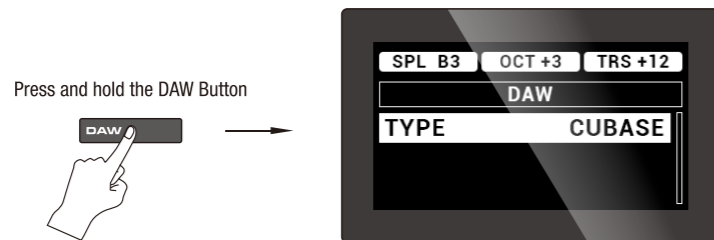
www.nuxaudio.com

Setup in Cubase

1. Connect the NUX NTK Series Keyboard to your computer using the supplied USB data cable.



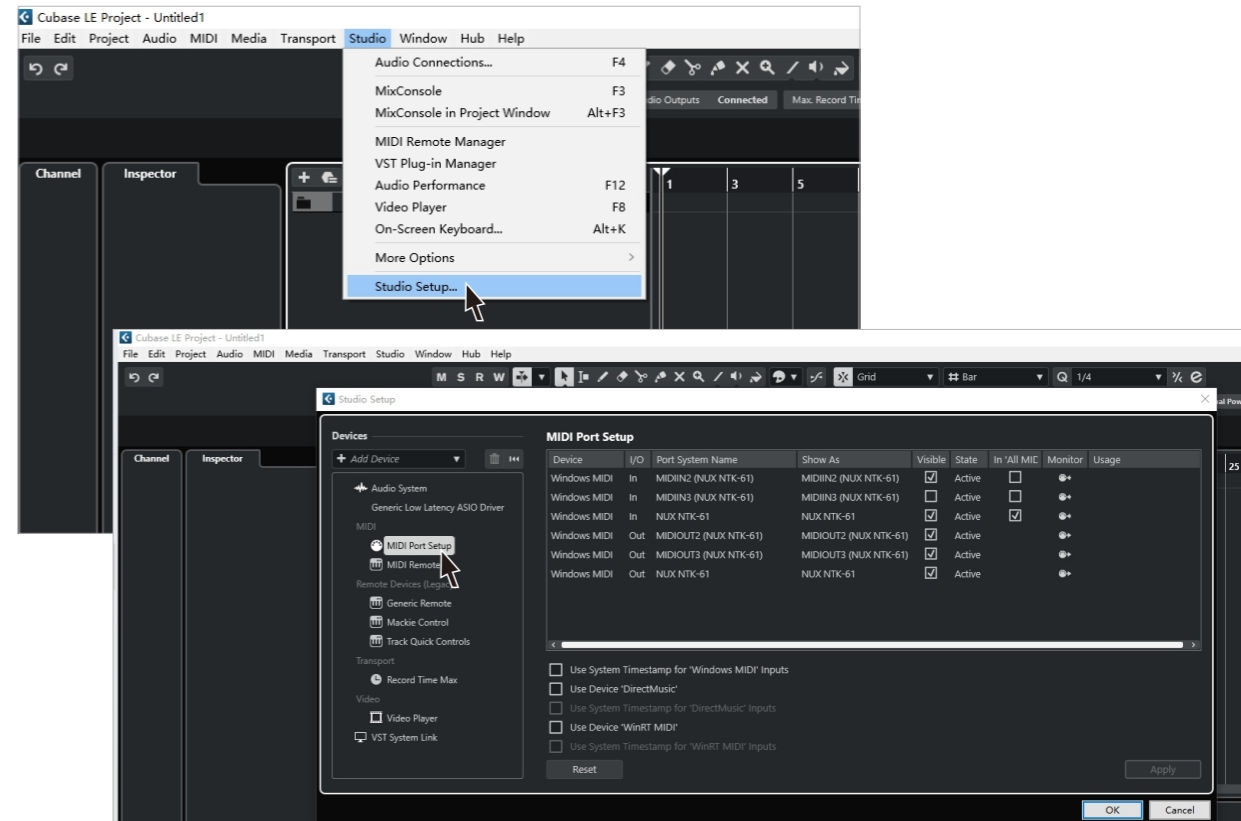
2. Press and hold the **DAW Button** to enter the DAW Mode, and use the encoder to select **CUBASE**.



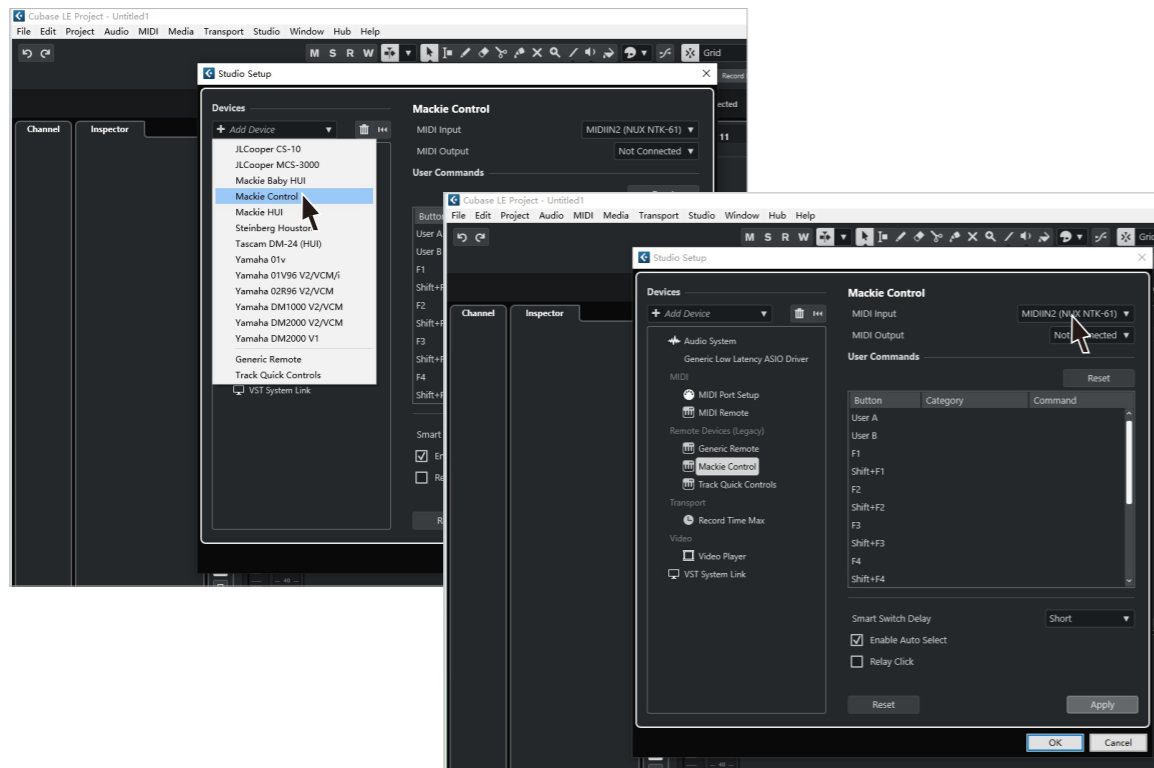
- ! Note:** There are 2 modes available on the NUX NTK Series, DAW Mode and MIDI Mode. When in DAW Mode, the controls on your NTK Keyboard will be mapped to your DAW controls. When in MIDI Mode, the controls on your NTK Keyboard will be used to control virtual instruments via MIDI CC.

3. Setup in Cubase:

- a. Launch Cubase. Open the **[Studio]** menu and click **[Studio Setup]**. Click on the **[MIDI Port Setup]** in the Devices list to the left, and configure the details as below:

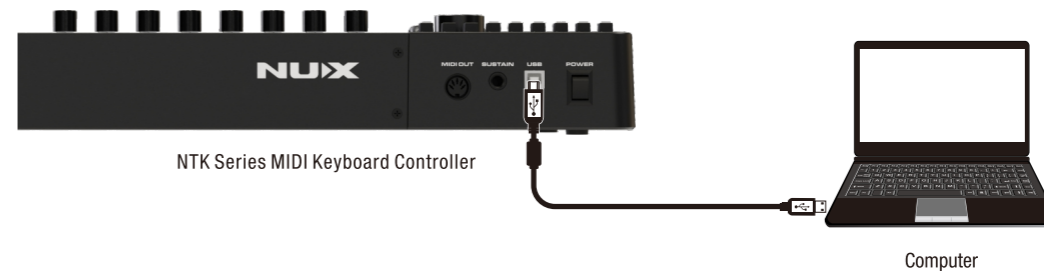


- b. Next, click **[Remote Devices]** in the Devices list. Click the **[+]** icon in the top left corner and select **[Mackie Control]** in the pulldown menu. In the **[MIDI Input]** menu, select **MIDIIN2 (NUX NTK-XX)**. Click **[OK]** to confirm.

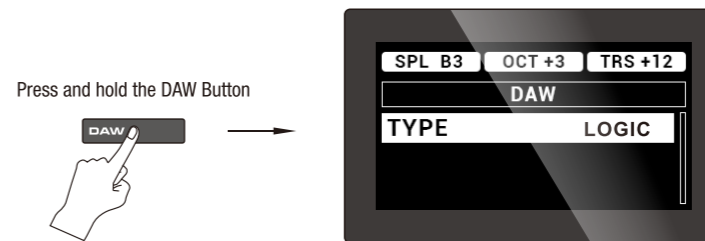


Setup in Logic Pro

1. Connect the NUX NTK Series Keyboard to your computer using the supplied USB data cable.



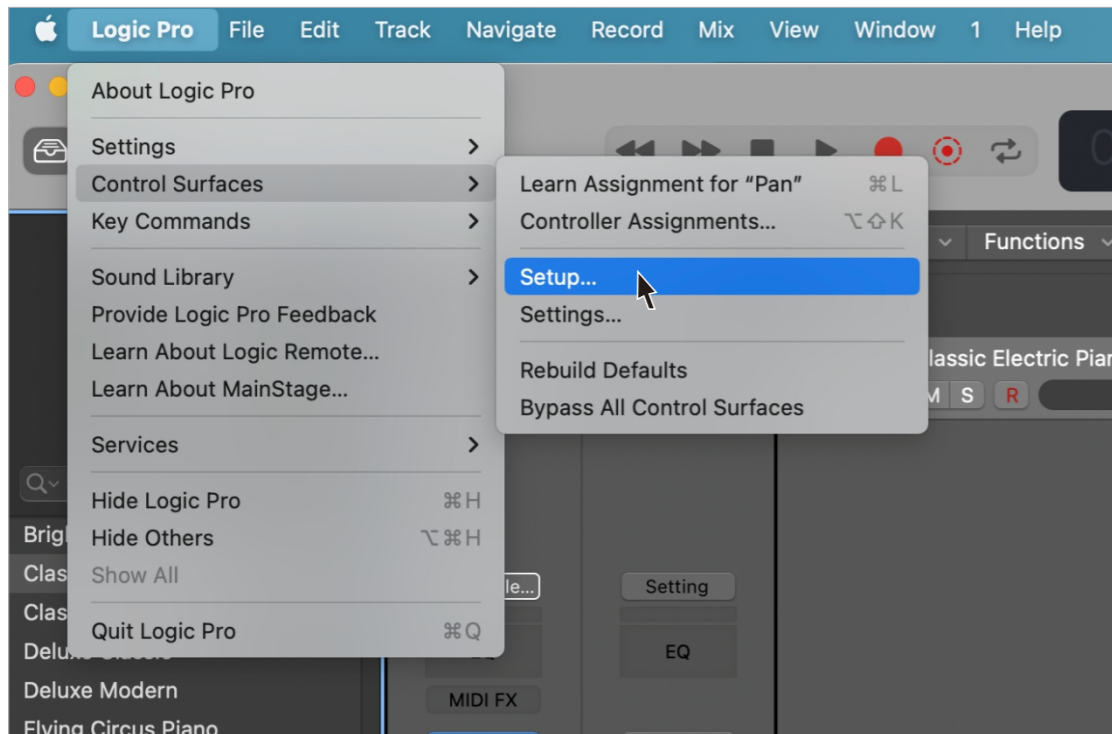
2. Press and hold the **DAW Button** to enter the DAW Mode, and use the encoder to select **LOGIC**.



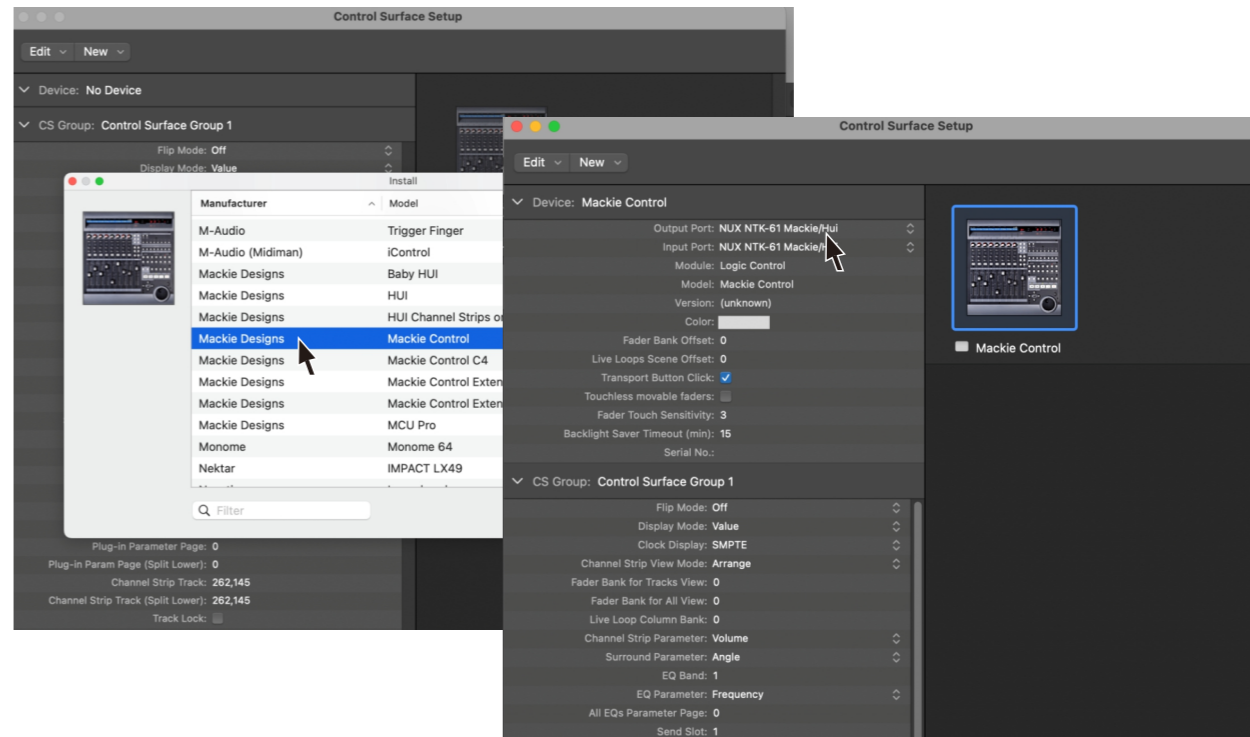
- ! Note:** There are 2 modes available on the NUX NTK Series, DAW Mode and MIDI Mode. When in DAW Mode, the controls on your NTK Keyboard will be mapped to your DAW controls. When in MIDI Mode, the controls on your NTK Keyboard will be used to control virtual instruments via MIDI CC.

3. Setup in Logic:

- a. Launch Logic Pro X. Open the **[Control Surfaces]** menu and click **[Setup...]**.

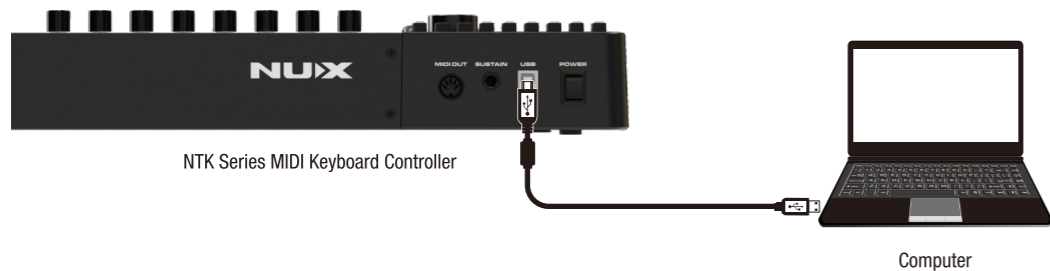


- b. In the **[Control Surface Setup]** window, click **[New]**, then select **[Mackie Designs - Mackie Control]** in the pop-up **[Install]** window and click **[Add]**. Go back to the **[Control Surface Setup]** window, select **NUX NTK-XX Mackie/Hui** for both the **[Input Port]** and the **[Output Port]**.

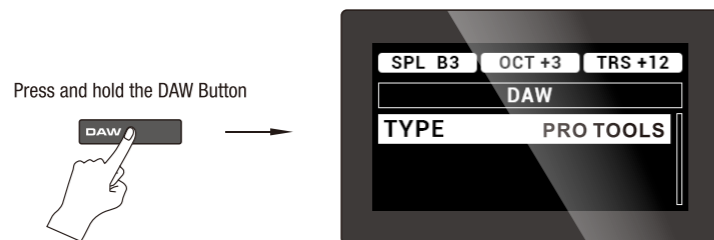


Setup in Pro Tools

1. Connect the NUX NTK Series Keyboard to your computer using the supplied USB data cable.



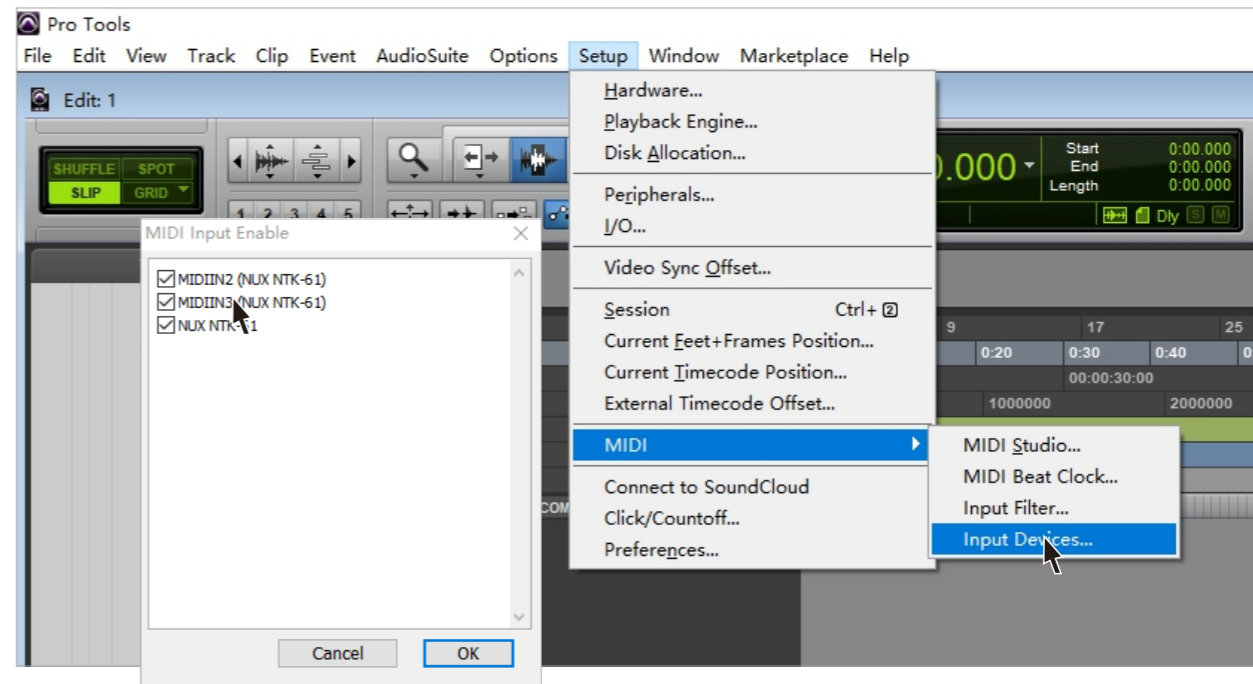
2. Press and hold the **DAW Button** to enter the DAW Mode, and use the encoder to select **PRO TOOLS**.



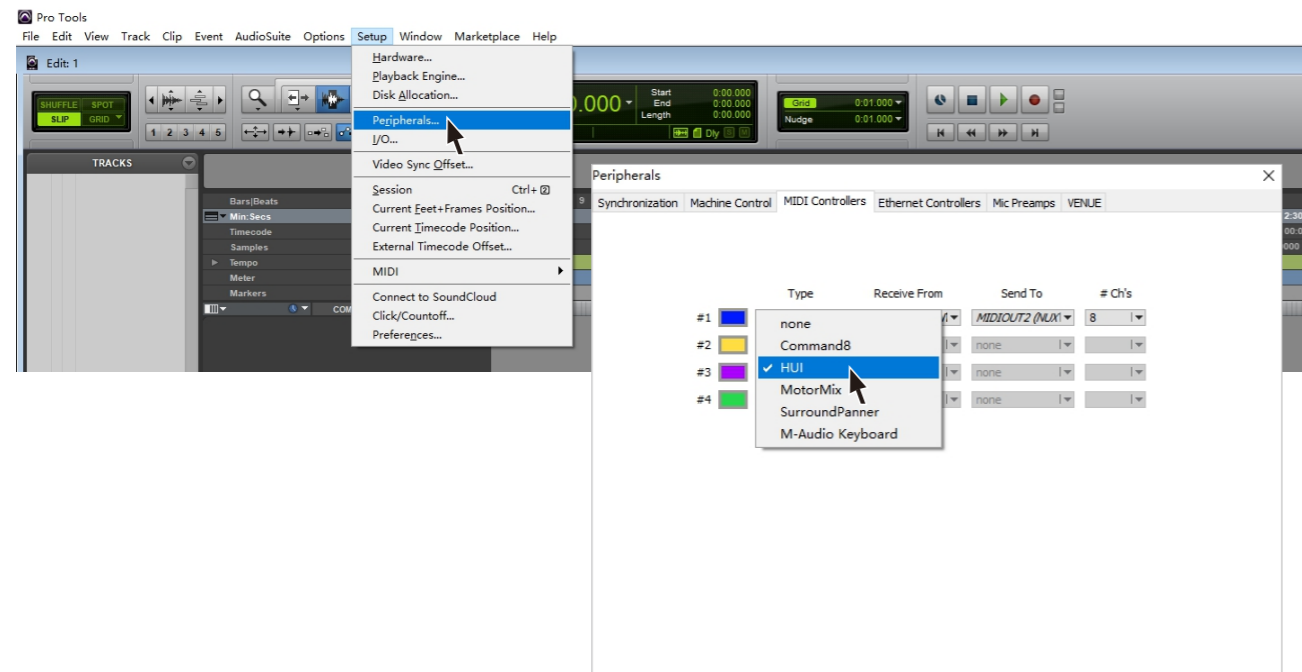
- ! Note:** There are 2 modes available on the NUX NTK Series, DAW Mode and MIDI Mode. When in DAW Mode, the controls on your NTK Keyboard will be mapped to your DAW controls. When in MIDI Mode, the controls on your NTK Keyboard will be used to control virtual instruments via MIDI CC.

3. Setup in Pro Tools:

- a. Launch Pro Tools. Open the **[Setup]** menu - **[MIDI]** menu, and click **[Input Devices...]**. Check all the options with NTK and click **[OK]** to confirm.



- b. Open the **[Setup]** menu again and click **[Peripherals]** In the pop-up window, click on the **[MIDI Controllers]** tab. Then click on the **[Type]** menu and select **[HUI]**.



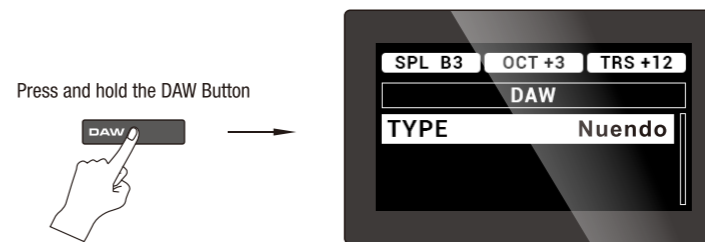
- c. The default #Channel is 8. Click **[OK]** to confirm.

Setup in Nuendo

1. Connect the NUX NTK Series Keyboard to your computer using the supplied USB data cable.



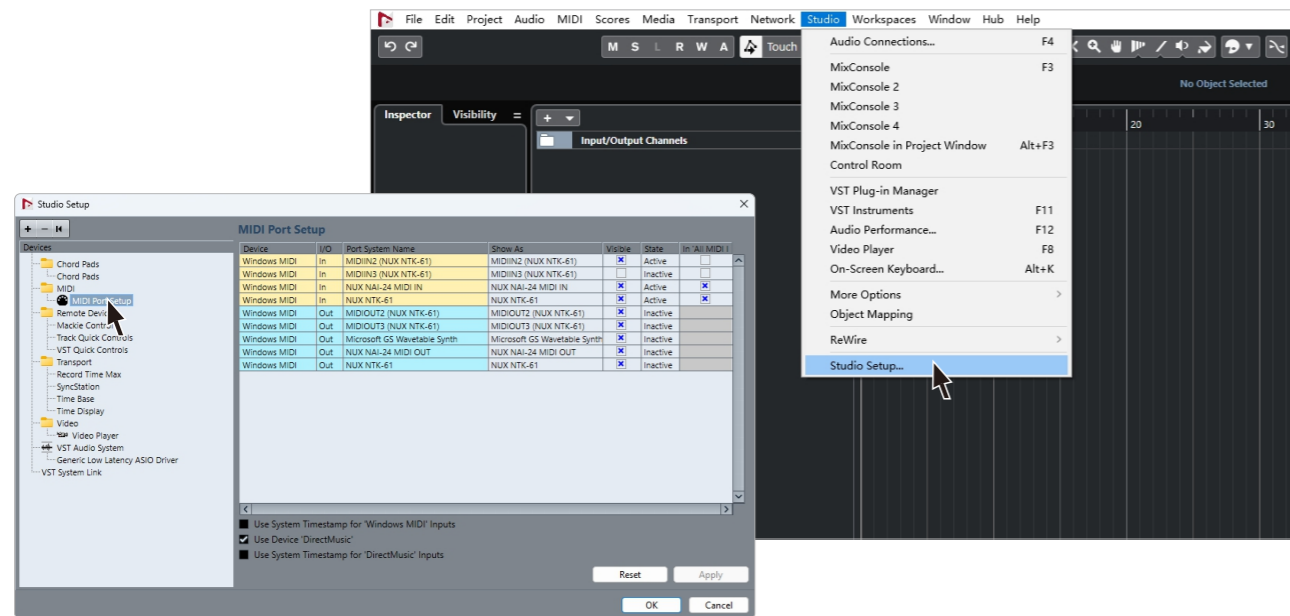
2. Press and hold the **DAW Button** to enter the DAW Mode, and use the encoder to select **Nuendo**.



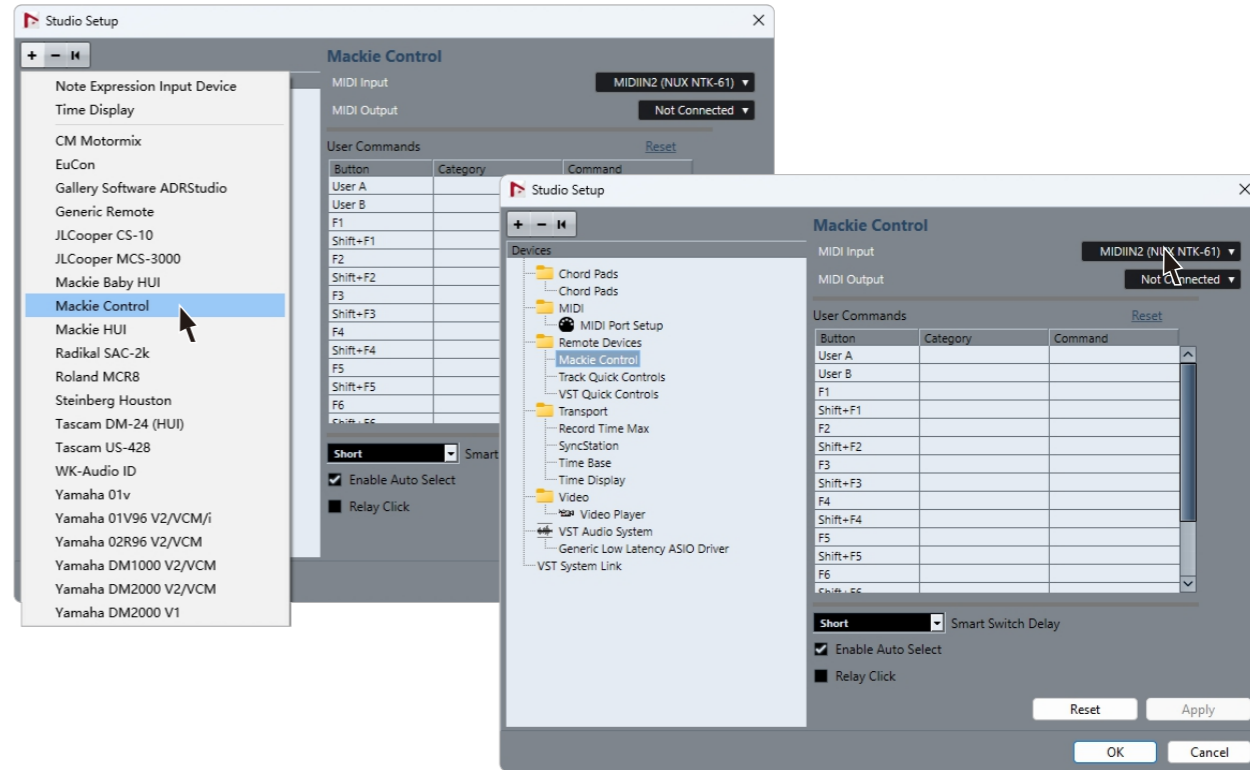
- ! Note:** There are 2 modes available on the NUX NTK Series, DAW Mode and MIDI Mode. When in DAW Mode, the controls on your NTK Keyboard will be mapped to your DAW controls. When in MIDI Mode, the controls on your NTK Keyboard will be used to control virtual instruments via MIDI CC.

3. Setup in Nuendo:

- a. Launch Nuendo. Open the **[Studio]** menu and click **[Studio Setup]**. Click on the **[MIDI Port Setup]** in the Devices list to the left, and select the details as below:

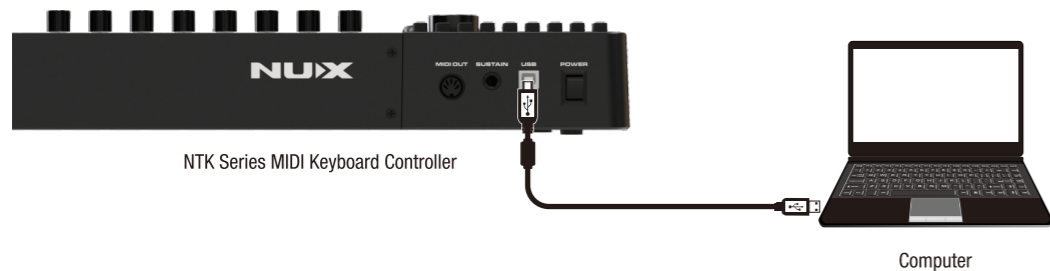


- b. Next, click **[Remote Devices]** in the Devices list. Click the **[+]** icon in the top left corner and select **[Mackie Control]** in the pulldown menu. In the **[MIDI Input]** menu, select **MIDIIN2 (NUX NTK-XX)**. Click **[OK]** to confirm.

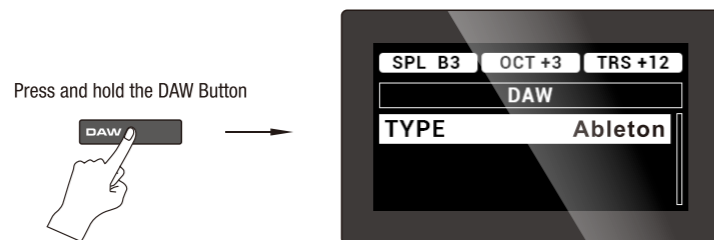


Setup in Ableton

1. Connect the NUX NTK Series Keyboard to your computer using the supplied USB data cable.



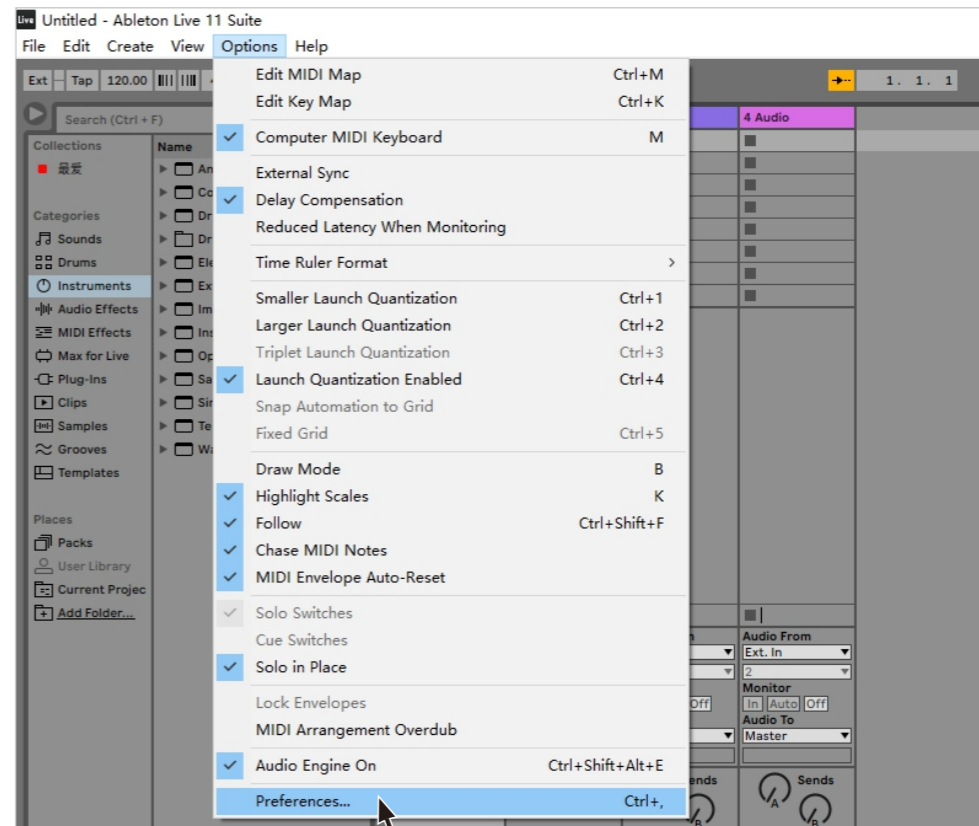
2. Press and hold the **DAW Button** to enter the DAW Mode, and use the encoder to select **Ableton**.



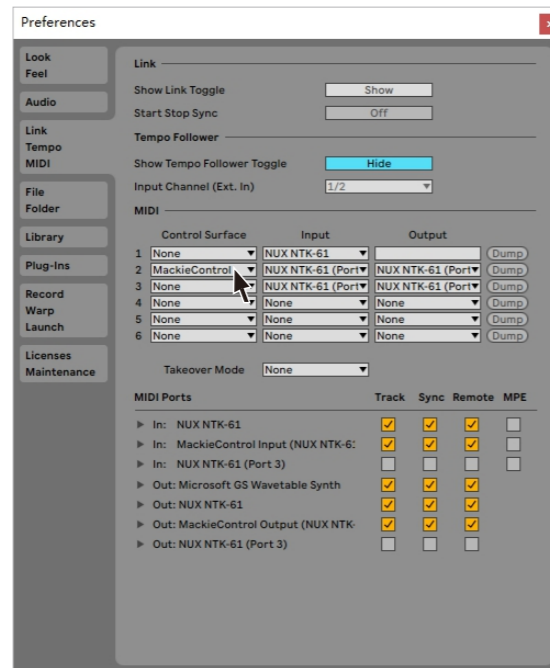
! Note: There are 2 modes available on the NUX NTK Series, DAW Mode and MIDI Mode. When in DAW Mode, the controls on your NTK Keyboard will be mapped to your DAW controls. When in MIDI Mode, the controls on your NTK Keyboard will be used to control virtual instruments via MIDI CC.

3. Setup in Ableton:

a. Launch Ableton. Open the **[Options]** menu and click **[Preferences]**.



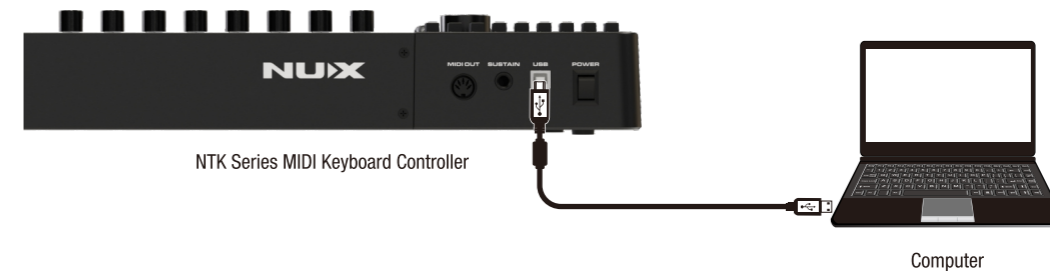
b. In the pop-up window, select **[Link/Tempo/MIDI]** tab, and configure the details as below:



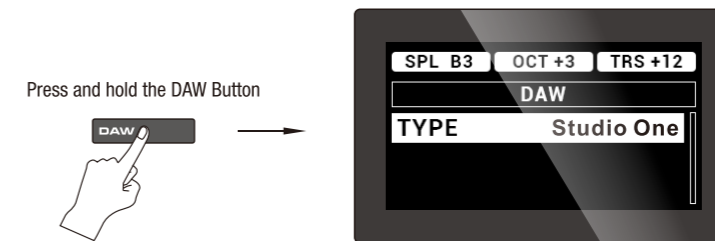
⚠ Note: The **[Control Surface]** of the NUX NTK-XX (Port2) needs to be selected as **[Mackie Control]**.

Setup in Studio One

1. Connect the NUX NTK Series Keyboard to your computer using the supplied USB data cable.



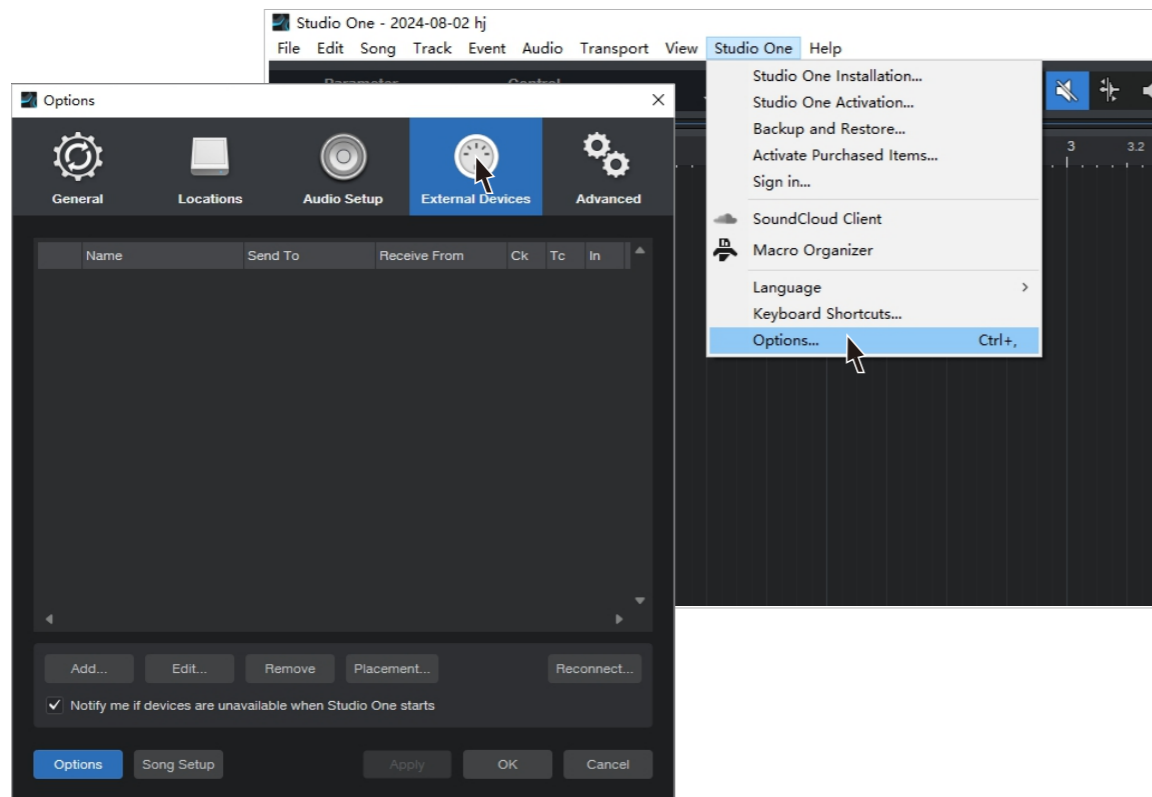
2. Press and hold the DAW Button to enter the DAW Mode, and use the encoder to select Studio One.



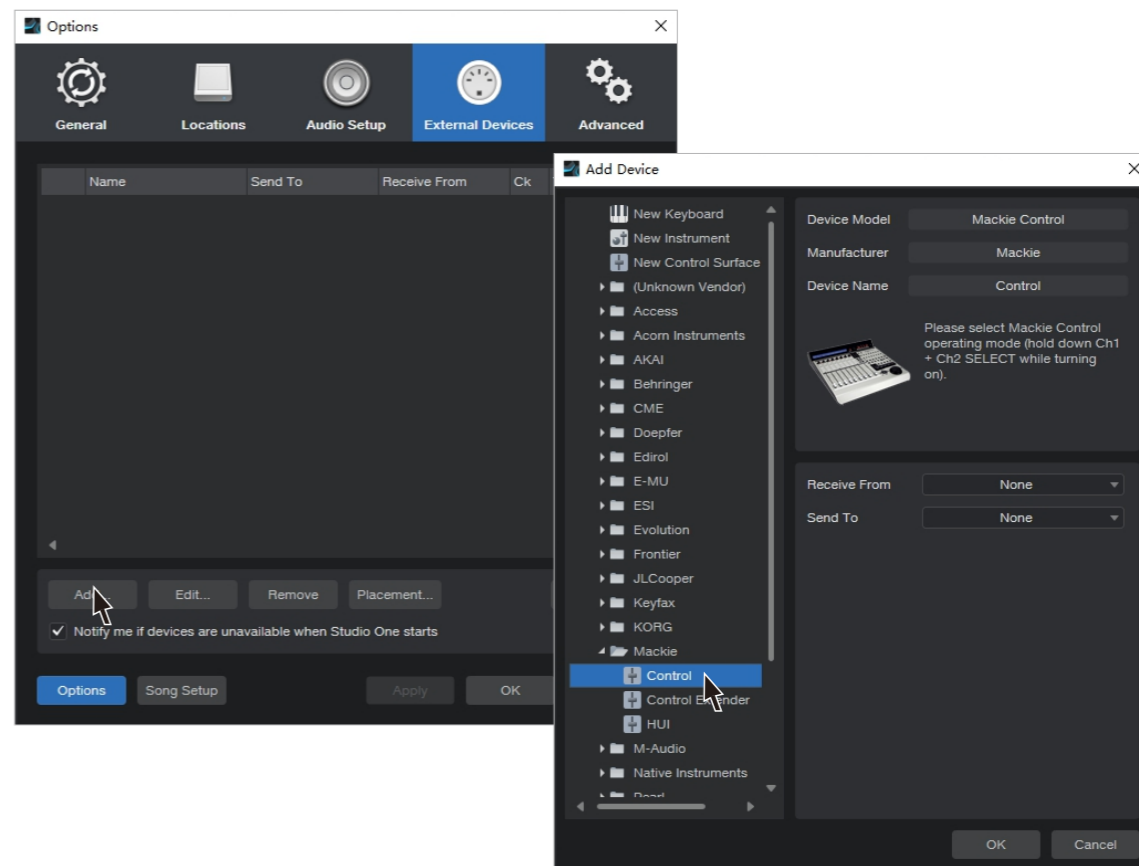
⚠ Note: There are 2 modes available on the NUX NTK Series, DAW Mode and MIDI Mode. When in DAW Mode, the controls on your NTK Keyboard will be mapped to your DAW controls. When in MIDI Mode, the controls on your NTK Keyboard will be used to control virtual instruments via MIDI CC.

3. Setup in Studio One:

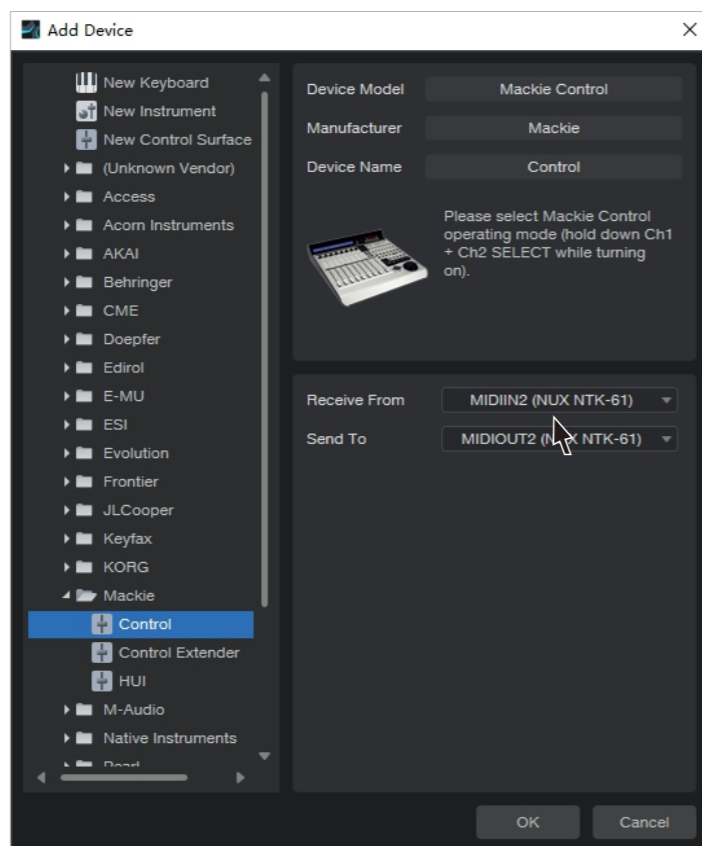
- a. Launch Studio One. Open the **[Studio One]** menu and click **[Options]** In the pop-up menu, click on the **[External Devices]** tab.



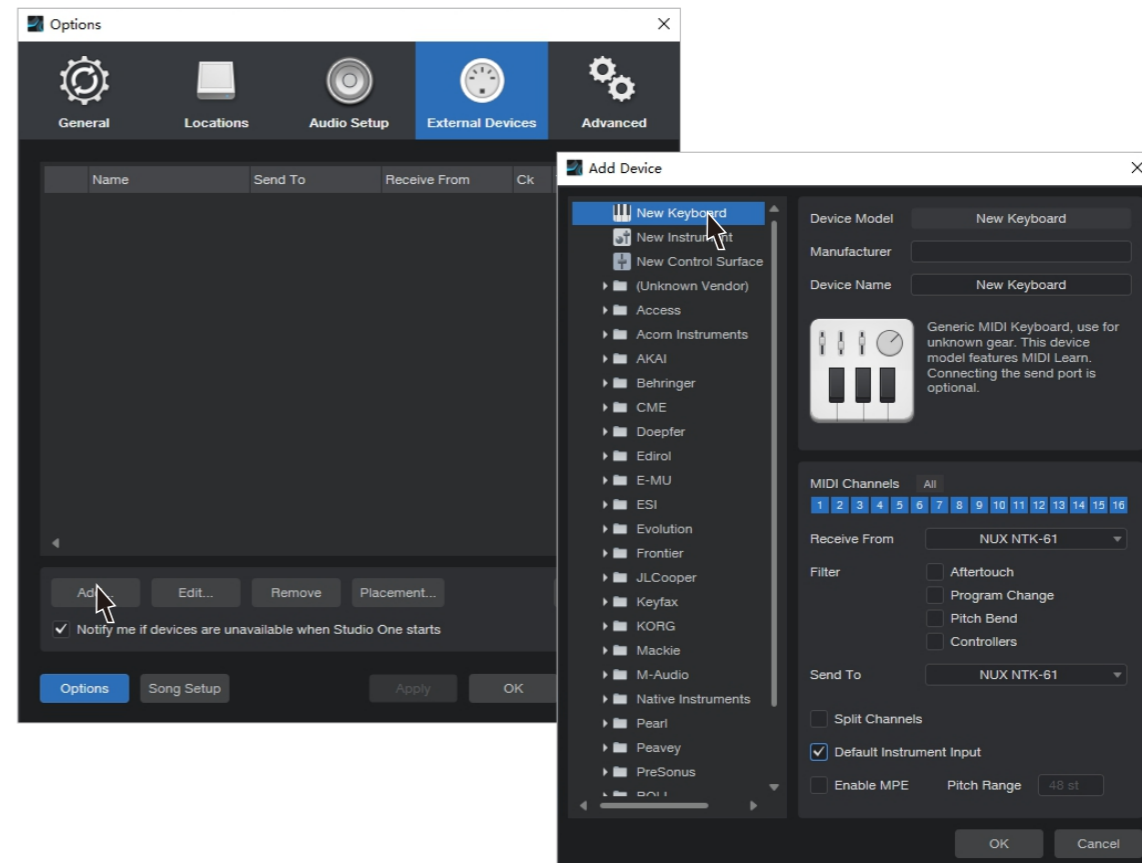
- b. Click **[Add]** at the bottom left of the window. Then in the pop-up menu, select **[Mackie - Control]**.



- c. Select **MIDIIN2 (NUX NTK-XX)** for the **[Receive From]** and select **MIDIOUT2 (NUX NTK-XX)** for the **[Send To]** Click **[OK]** to confirm.

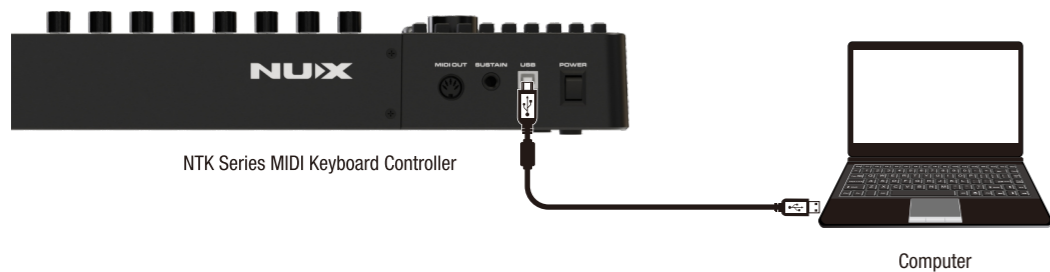


- d. Click **[Add]** again and select **[New Keyboard]**. In both the **[Receive From]** and the **[Send To]** menus, select **NUX NTK-XX**. Check the **[Default Instrument Input]** box. Click **[OK]** to confirm.

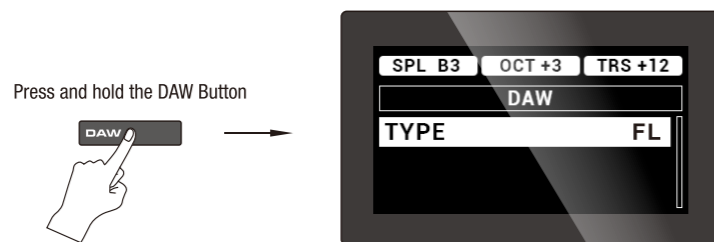


Setup in FL Studio

1. Connect the NUX NTK Series Keyboard to your computer using the supplied USB data cable.



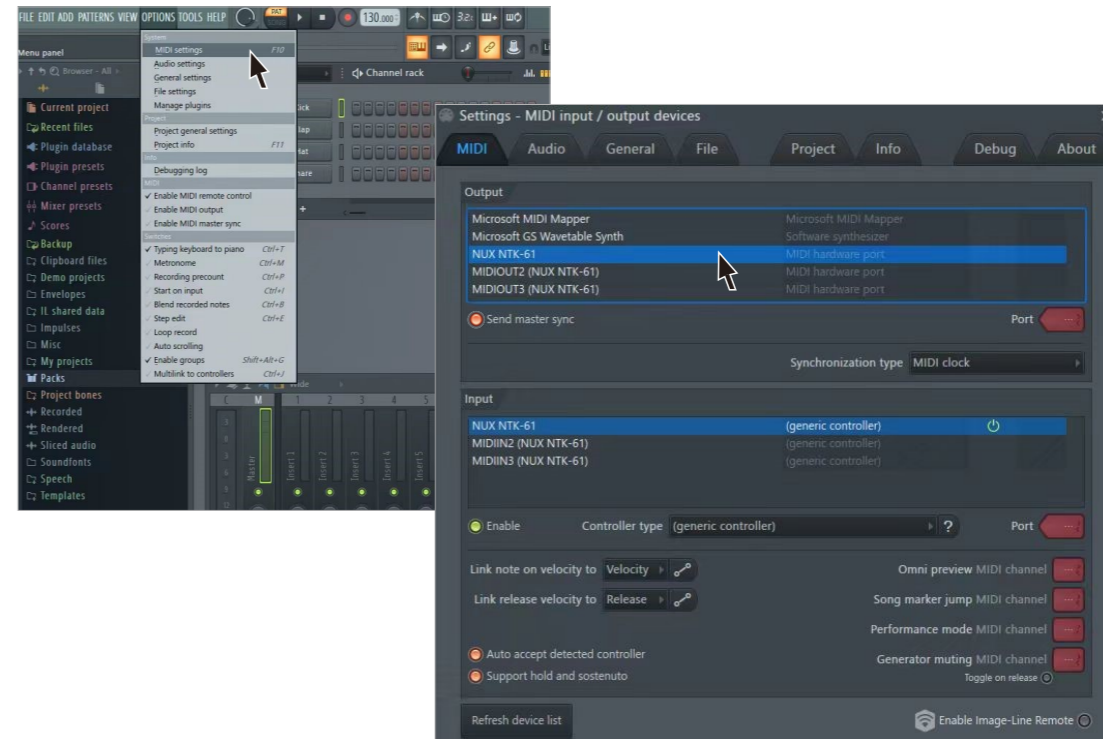
2. Press and hold the **DAW Button** to enter the DAW Mode, and use the encoder to select **FL**.



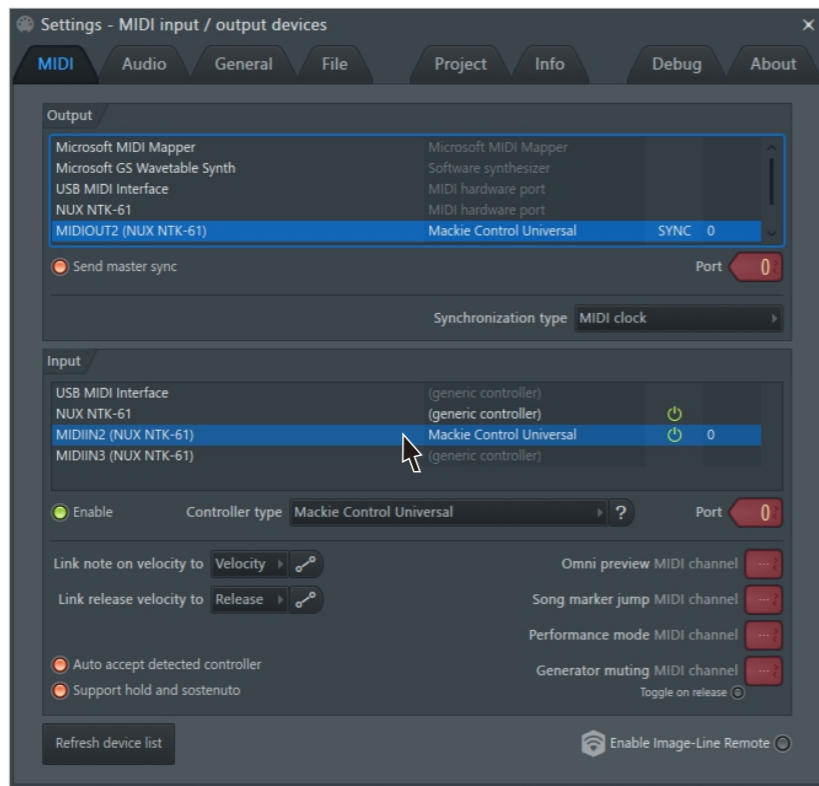
- ! Note:** There are 2 modes available on the NUX NTK Series, DAW Mode and MIDI Mode. When in DAW Mode, the controls on your NTK Keyboard will be mapped to your DAW controls. When in MIDI Mode, the controls on your NTK Keyboard will be used to control virtual instruments via MIDI CC.

3. Setup in FL Studio:

- a. Launch FL Studio. Open the **[OPTIONS]** menu and click **[MIDI Settings]**. In the pop-up menu, select **NUX NTK-XX** for **[Output]** and turn on **[Send master sync]**. Select **NUX NTK-XX** for **[Input]**, then set **[Controller type]** as **[generic controller]** and turn on **[Enable]**.

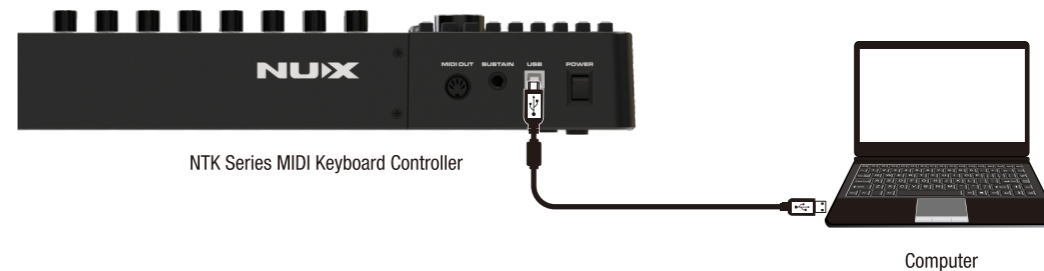


- b. Next, select **MIDIOUT2 (NUX NTK-XX)** for **[Output]**, then set the **[Port]** value to 0 and turn on **[Send master sync]**. Select **MIDIIN2 (NUX NTK-XX)** for **[Input]**, then set **[Controller type]** as **[Mackie Control Universal]**, set the **[Port]** value to 0, and turn on **[Enable]**.

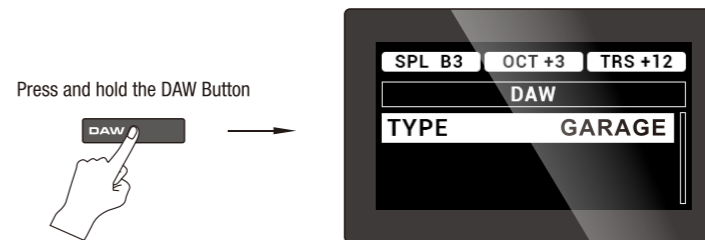


Setup in Garage Band

1. Connect the NUX NTK Series Keyboard to your computer using the supplied USB data cable.



2. Press and hold the **DAW Button** to enter the DAW Mode, and use the encoder to select **GARAGE**.



- ! Note:** There are 2 modes available on the NUX NTK Series, DAW Mode and MIDI Mode. When in DAW Mode, the controls on your NTK Keyboard will be mapped to your DAW controls. When in MIDI Mode, the controls on your NTK Keyboard will be used to control virtual instruments via MIDI CC.

3. All the controls on the NTK Keyboard are mapped for Garage Band automatically and work for one track at a time. You can push the encoder up or down to switch to other tracks. The transport controls are also available for use.

