



Set up your solutions



Ready-to-Use Panel
Integrated product design

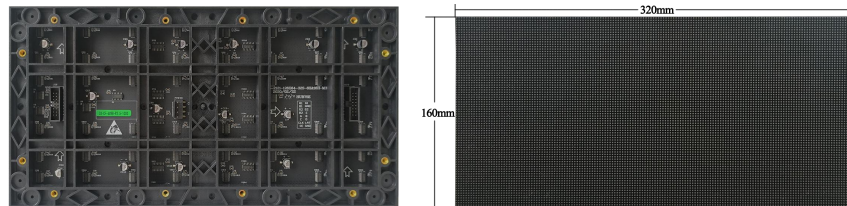
Lightweight Design
12kg/m², 46.5mm

Superior Performance
High refresh rate

Flexible Splicing
Standard & small panels

L-shaped Corners
Create innovative designs

Wireless Connectivity
No wires in the cabinet



Quick Installation
Efficiency increased by 40%

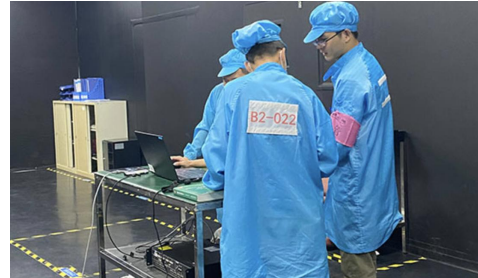
Easy Maintenance
Full front maintenance

Ready-to-Use LED Panel

Superior Quality / Worry-Free / Safe & Secure

Superior Quality

- Excellent Product Design
- Reliable Raw Materials
- Standard Manufacturing Process
- Quality Control Throughout the Whole Manufacturing Process
- Extraordinary Visual Effect



Worry-Free

- Ready-to-Use Panel
- Quick Installation
- One-Stop Standard Solution
- Global Service & Long-Term Warranty



Safe & Secure

- Safe and Trustworthy
- Global Certification: CCC, FCC, ETL, CE, RoHS
- Professional Installation & Maintenance Services



On-Site Assembly LED Panel

Inferior Quality / Troublesome / Hidden Dangers

Inferior Quality

- Crude Product Design
- Poor Raw Material
- Non-Standard Manufacturing Process
- No Strict Quality Control
- Terrible Visual Effect



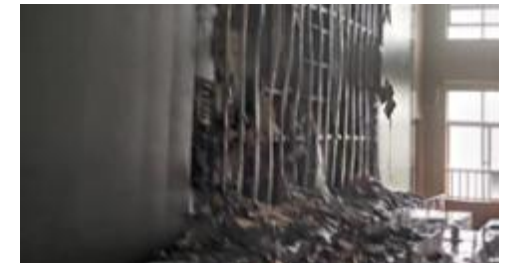
Troublesome

- On-Site Assembly
- Complicated Installation
- Non-Standard Solution
- Unreliable After-Sales Service



Hidden Dangers

- Great Security Risks
- No Certification
- Non-Standard Installation & Maintenance Services



Ultra–Thin & Lightweight

Ultra–thin, lightweight design for effortless handling and efficient space utilization, elevating user experience.

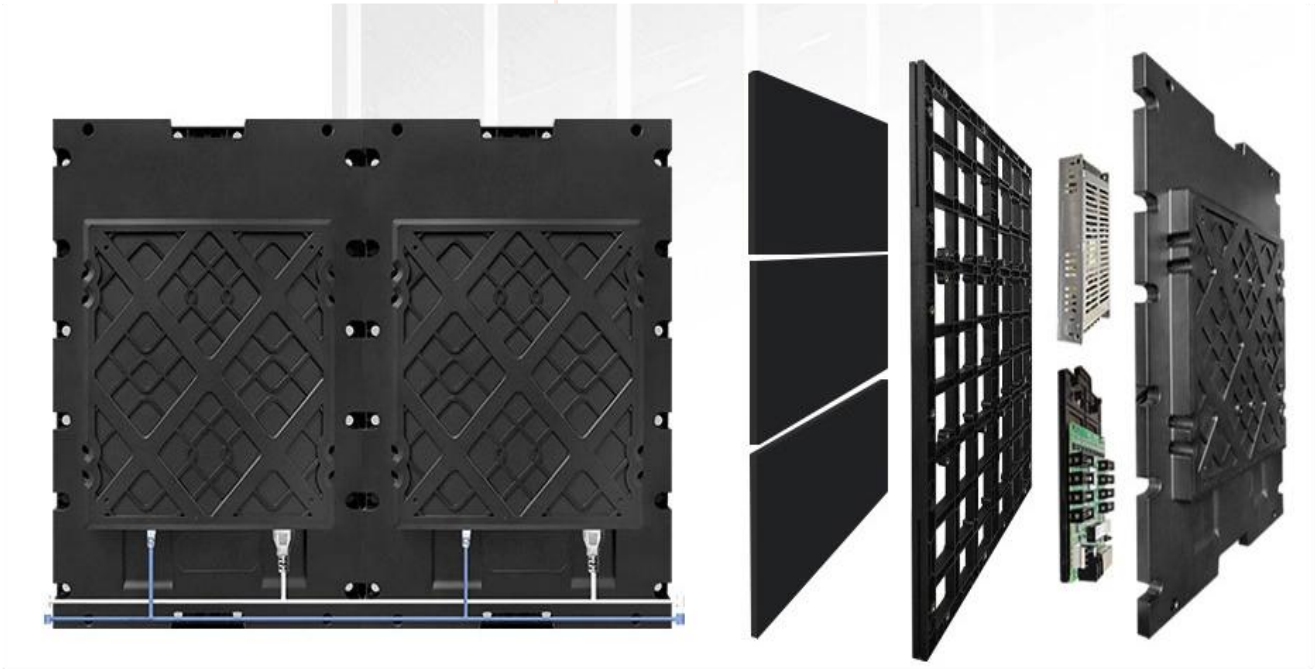


55mm
The thinnest part is only 24mm

≤12kg/m²
Ultra–lightweight

Integrated design

Integrated module, receiving card, and power supply. Reserve interfaces to reduce external cables,More concise overall



Standard Magnetic Wall-Mount

Unlock valuable space and enhance layout flexibility with our standard wall-mount solutions, boasting a sleek profile of less than 90mm.



Neat Cabling, Simple Operations

Quick and easy setup with just one RJ45 signal cable and one power cable—streamlined for efficiency without compromising performance.ature quality.



Full Front Maintenance

By using vacuum maintenance tools, itsimplifies front-end maintenance without the need for extra channels, ensuring easy assembly and a user-friendly operation.



Parameters

HELVIA CRY-250v5-2.5-PVC

| | | | | | |
|--------------------------|-------------------------------------|-------------------------|--|--------------|--|
| Parameters | | | | | |
| Physical Parameter | LED type | | | SMD1515 | |
| | Pixel pitch (mm) | | | 2.5 | |
| | Panel dimensions (W*H, mm) | | | 320×480×46.5 | |
| | Panel resolution | | | 128×192 | |
| | Pixel weight (kg) | | | 1.75 | |
| | Module size (W*H, mm) | 320×160 | | | |
| | Brightness (nit) | 500 | | | |
| Optoelectronic Parameter | Refresh rate (Hz) | 3840 | | | |
| | Grayscale (bit) | 12~13 | | | |
| | Viewing angle (H/V, °) | 160/140 | | | |
| | Power consumption (max./avg., W/m²) | | | 330/110 | |
| | | | | | |
| Application Parameter | Storage temperature (°C) | - 40~ + 60 | | | |
| | Operating temperature (°C) | - 10~ + 40 | | | |
| | Storage humidity (RH) | 10%~85% | | | |
| | Operating humidity (RH) | 10%~80% | | | |
| | IP rating | IP40/IP21 | | | |
| | Certificate | CCC, FCC, ETL, CE, RoHS | | | |



*Power consumption tolerance: ±15%, according to the actual situat